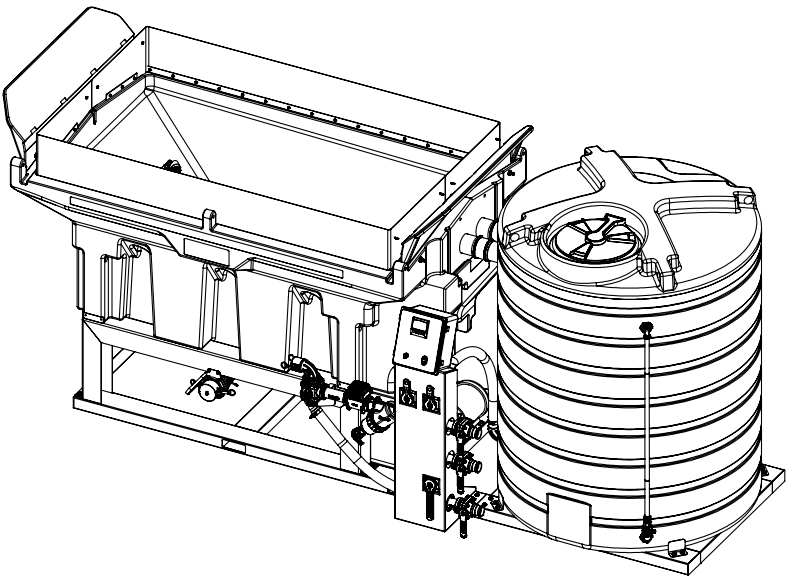


BRINE MASTER 3000[®]

OWNER'S MANUAL




Product Code:
IMSBM3000

Version 1.1

Copyright © Enduraplas. All Rights Reserved.



CONTENTS

INTRODUCTION	3
<hr/>	
WARNINGS 	4 - 5
<hr/>	
GETTING STARTED	6 - 9
<hr/>	
OPERATION	10 - 11
<hr/>	
MAINTAINING	12 - 13
<hr/>	
TROUBLESHOOTING	13
<hr/>	
WARRANTY	14 - 17
<hr/>	
PARTS BREAKDOWNS	18 - 24

INTRODUCTION

Congratulations! You now own an Camion™ Brine Master®. Durable design and construction assure you a lifetime of extreme performance.

Take a look through this owner's manual to learn how the pros use their Camion™ Brine Master®.



Watch Instruction Videos:
www.youtube.com

Discover More Helpful Tips:
www.icecontroltraining.com

WARNINGS

1. To ensure your own safety and that of others, you must comply with all relevant environmental, work place health, safety legislation and codes of practice.
2. Select and wear appropriate Personal Protection Equipment in accordance with the label of the product you intend to use.
3. Once the mixing operation has been completed, decontaminate the tank and spray accessories. Dispose of tank rinsing's in compliance with current environmental, work place health and safety regulations.
4. Improper or careless use of this brine maker can cause serious injury. Minors should never be allowed to use this brine maker. This brine maker should not be used when bystanders or animals are in the area. This brine maker should never be used while children are in the area.
5. Never leave the brine maker unattended without turning off the pump and relieving any line pressure.
6. You must be in good mental health to operate this brine maker and not be under the influence of alcohol or any drugs that could impair your vision, physical strength, dexterity, judgment, or other mental capacity.
7. No modifications and/or alterations may be made to this brine maker. Any such modifications not only void the warranty but can make the unit dangerous to anyone operating the pump.
8. Always inspect hoses and piping to avoid burst injuries

Discover More Helpful Tips:
www.IceControlTraining.com

GETTING STARTED

Electrical Requirements

The Brine unit requires a 220 volt, 30 amp circuit to operate. It comes supplied with wiring and plug ready to hook up. You will need a 220 volt outlet with a 30 amp breaker in your box. Follow all local code requirements. Use a certified electrician to install power supply.

Setting-up your Brine Master®

1) Ensure your Brine Master® is positioned so you have access to all port hook ups and the control panel.



2) Make sure your unit is level by using the base frame as your levelling point and adding shims underneath the frame accordingly.

3) Next, connect your fresh water supply hose to valve #4 and your discharge supply hose to valve #5.



GETTING STARTED**Setting-up your Brine Master®**

4) To achieve best results with your brine maker, use a good quality salt. The quality of your salt aids in speeding up the brining process and will eliminate having to clean out screens as often.



5) Fill your unit with fresh water and cycle to ensure there is no leaks or issues with power supply. See below handle configuration to fill your unit with water.



6) To eliminate overspray, do not start your pump until the jet nozzles are submerged in water.



GETTING STARTED

Calibrating your Brine Master®

Your unit comes preprogrammed from the factory. You will only have to reset your cell constant.

1) After all setup is complete and you begin mixing brine, you will adjust your cell constant up or down. Up if your digital readout is reading lower than your floating hydrometer and down if your digital readout is reading higher than your hydrometer. You should only need to do this procedure at set up.



2) To test your sample, pull from the lower filter by opening the valve and emptying into a clean bucket.



3) When doing this technique, be sure to clear any previous contents out of the lower filter drain before pulling your sample.



4) Your unit comes preprogrammed from the factory set at 3.100. This baseline setting should get you within 1.5% plus or minus depending on your salt purity and water hardness.



GETTING STARTED**Calibrating your Brine Master®**

5) To adjust your cell constant, hold the Cal and Mode button simultaneously.



6) The menu will come up. Now press enter to continue. Click the first menu option and press enter.



7) You will adjust this constant up or down. Up if your digital readout is reading lower than your floating tester and down if your digital readout is reading higher than your floating tester. Then hit enter. Keep adjusting this up or down until your percentage on your main screen is accurate with your floating hydrometer tester.



OPERATION

First Batch of Brine

1) On your first batch allow water to gravity feed until jet nozzles are submerged this helps with water splashing.



2) Continue by turning on pump to fill your hopper to the bottom of the screen with fresh water.



3) Continue to add salt to the hopper while your system is filling with fresh water.

4) Then fill your hopper with salt. Load your salt to the back of the hopper, away from the screen making sure not to obstruct.



It is best to load in the center of the hopper letting water escape to the overflow along each edge. Always load salt slowly to avoid spillage. Your first batch of brine will require more salt as you are starting with a hopper of fresh water. On consecutive batches you will load less salt as you start with a hopper of mixed brine.

5) You need to add enough salt so that it mounds up in the center of the hopper on each cycle.



OPERATION

First Batch of Brine

6) Once salt is added, continue filling the system with fresh water until the holding tank is at 600 gallons. Reference the site gauge tube. - We recommend marking or putting a piece of tape to note this level.



7) Now you will start the brining process.



8) Once your salinity reader reads at 23%, position valves to discharge to your storage tank.



9) As you are discharging your finished batch to your storage tank, fill your hopper with salt for your next batch. Again, make sure to load in the center of the hopper away from the screen. This will force some of the brine into your holding tank increasing your batch size.



10) Once all brine is discharged rotate valves to load fresh water and repeat steps.



MAINTAINING

The unit requires proper care for longevity and proper operation. Follow all requirements for pump and motor by reviewing their manuals that are included.

At the beginning of each brining session ensure there are no hose or fitting leaks.

There is a 3" bottom cleanout on the bottom of hopper that can be connected to a hose or can be opened and drained into skid steer bucket. Also to drain hopper you can put a suction hose onto the additive port and insert the suction end with a screen attached into hopper. You will need to have valves set to the down position. Your discharge hose needs to be connected so hopper can discharge into your applicable tank.

The filter screen should be cleaned of any debris that would cause a flow issue. Simply wipe off screen and disposing of debris in a trash can.

The lower filter has a drain which while running can be opened SLOWLY to release any debris from filter into a bucket.

DO NOT leave salt brine in pump unit over long periods of time of non use. This can cause salt creep and can move into motor and seize up. Best practice is to clean the hopper after use to prevent salt from hardening in the bottom of the hopper. This can take a very long time to dissolve on the... next use. Run clean water through unit and then drain pump using drain plug located at bottom.

MAINTAINING

If you notice your flow rate has decreased to under 100 gpm on flowmeter it is required to disassemble filter by shutting off unit and opening drain valve. Then unscrew housing and clean screen inside. Reassemble and continue use.

Always Clean unit with fresh water at the end of every season to clean out all brine left in brine maker to insure proper operations for the following years.

TROUBLESHOOTING

CONDITION	REMEDY
Flow rate is dropping	1) Check for a blockage on the screen.
Hopper is backing up or overflowing	1) Ensure there is no blockage on internal hopper screen. 2) Clean debris or salt away from the screen. 3) Make sure you are not filling your orange brining tank over 600 gallons.
Pump will not turn on	1) Check breakers and relays. Reset if needed. 2) Check adequate power supply. 3) Verify wiring is in good condition.
Bottom clean out on hopper drain will not flow	1) Place implement bucket underneath the 3" clean out valve and remove obstruction by running garden hose into tank fitting in the bottom of hopper to dislodge.

WARRANTY

1. Poly Tank Limited Warranty - Subject to other terms in this Limited Warranty, Manufacturer warrants to the original end user that this Tank will be free from material defects caused during the manufacturing process for a period of 5 years from the Purchase Date provided such warranty to the original end user shall be extended to 10 years from the Purchase Date if the original end user registers the Tank with Manufacturer within 30 days of the Purchase Date. To register the Limited Warranty, registration must be completed in accordance with the requirements set forth at enduraplaswarranty.com

Other Products and Parts Limited Warranty - Subject to other terms in this Limited Warranty, Manufacturer warrants to the original end user that products and parts manufactured by Manufacturer (other than tanks) will be free from material defects caused during the manufacturing process for a period of 1 year from the Purchase Date unless otherwise expressly stated in writing by Manufacturer that an extended warranty applies.

2. Other Warranties Disclaimed and Excluded

THERE ARE NO WARRANTIES, EXPRESS OR IMPLIED, WHICH EXTEND BEYOND THE LIMITED WARRANTY HEREIN STATED, AND MANUFACTURER EXPLICITLY DISCLAIMS AND EXCLUDES ANY AND ALL OTHER WARRANTIES INCLUDING BUT NOT LIMITED TO WARRANTIES OF MERCHANTABILITY, FITNESS FOR PARTICULAR PURPOSE, CUSTOM OR USAGE OF TRADE, AND COURSE OF DEALING. NO AGENT, EMPLOYEE OR REPRESENTATIVE OF MANUFACTURER HAS AUTHORITY TO BIND MANUFACTURER TO ANY REPRESENTATION OR WARRANTY EXCEPT AS STATED IN THIS LIMITED WARRANTY.

3. Limitation of Liability under the Limited Warranty - In addition to those warranties disclaimed and excluded in clause 2 above, Manufacturer expressly further limits its warranty and liability under the Limited Warranty as set forth below in this clause 3.
- 3.1. The liability of Manufacturer under this Limited Warranty is excluded to the extent that any defect has been caused or contributed to by:
- a) any accident, contamination, tampering, willful damage, abuse, modification, improper storage, improper use (including but without limitation the storage of material) or negligent act of, or omission by, any person other than Manufacturer;
 - b) the improper installation of the Goods, or deterioration of the base on which any of the Goods rest or are mounted to;
 - c) any damage to the Goods caused by storm, wash away, landslide, mudslide, lightning, or any other natural phenomenon, vermin or other pests, and any undermining of the base of the Tank through any cause whatsoever;
 - d) the repositioning of the Goods from their original installation;
 - e) weathering or degradation of the Goods due to extreme climatic conditions;
 - f) improper installation of extra fittings;
 - g) any staining or discoloration, including from trees or ash fall-out from fires or other causes;
 - h) a Tank not being placed on a base that is free of any protruding objects of any kind;
 - i) a Tank being used for any purpose other than the storage of suitable liquids at the ambient temperatures.

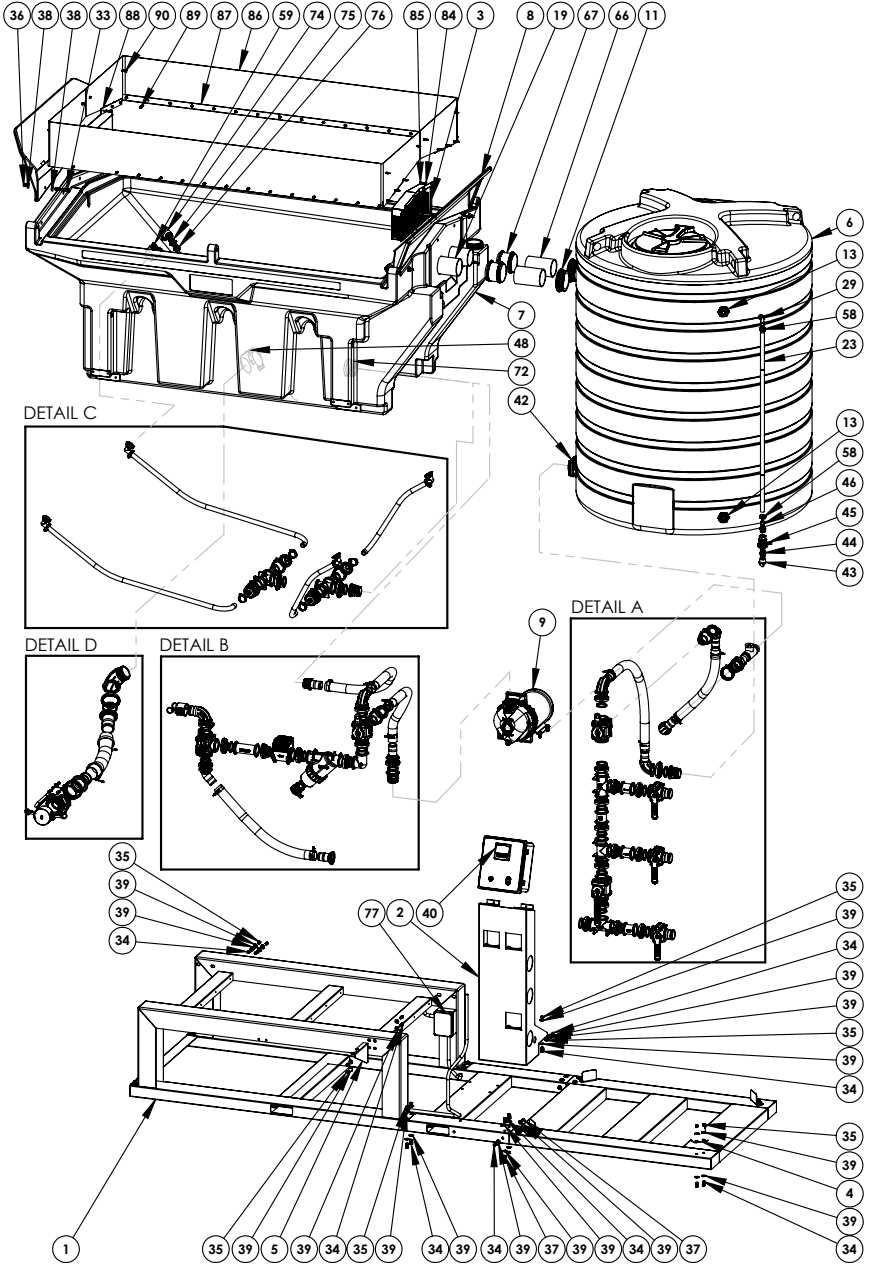
3.2. Without limiting the generality of clause 3.1:

- a) Manufacturer will not be liable for any personal injury, indirect or incidental damages, consequential losses, loss of liquids, loss of profit or any like claims whatsoever arising from any use of, or incidental to, or repairs to any of the Goods by a party other than Manufacturer;
- b) to the extent that any component or material (including, but without limitation the polyethylene) used in the manufacture of any of the Goods is supplied and/or manufactured by a third party, the liability of Manufacturer is limited to Manufacturer's right of redress (if any) against the third-party supplier/manufacturer;
- c) Tanks feature a vented lid at the time of manufacture. Any subsequent pressurization of the Tank by removing the vent, sealing the vent, or otherwise will cause this Limited Warranty as to such Tank to be null and void.
- d) The liability of Manufacturer under this Limited Warranty is limited to, at Manufacturer's discretion:
- e) providing a replacement Good (including shipping but excluding other replacement costs);
- f) refunding an amount equal to a sum equal to the current Retail price divided by the months in the warranty, multiplied by the months remaining in the warranty period;
- g) repairing the Good at no cost.

4. Proof of Purchase - The original invoice or other similar proof of purchase of the applicable must be provided by Purchaser to Manufacturer when making a claim under this Limited Warranty. Warranty claims must be received in writing by Manufacturer within the Limited Warranty period.

5. Claims and Questions - If you have questions about this Limited Warranty or to make a warranty claim, contact Manufacturer at: customercare@enduraplas.com
6. Definitions - For this Limited Warranty the following definitions apply:
 - a) Manufacturer means Enduraplas LLC.
 - b) Purchase Date means the date upon which the applicable goods were purchased by the original end user.
 - c) Purchase Price means the actual price paid for the Tank by the original Purchaser.
 - d) Tank means the storage Tank manufactured by Manufacturer and purchased by the original end user Purchaser being the subject matter of the Limited Warranty.
 - e) Good(s) mean Tanks and/or other products or parts manufactured by Enduraplas LLC.
 - f) Limited Warranty means this written Limited Warranty.
7. State Law - Some states do not allow the exclusion or limitation of incidental or consequential damages, so the above limitation and exclusion may not apply to certain parties. Some states do not allow limitation on how long an implied warranty lasts, so the above limitation may not apply to certain parties. This limited warranty gives specific legal rights and other rights, which vary from state to state, may also apply.
8. Governing Law - This Limited Warranty will be governed by the laws of the State of Minnesota, without giving effect to any choice of law rule that would cause the application of the laws of any other jurisdiction.

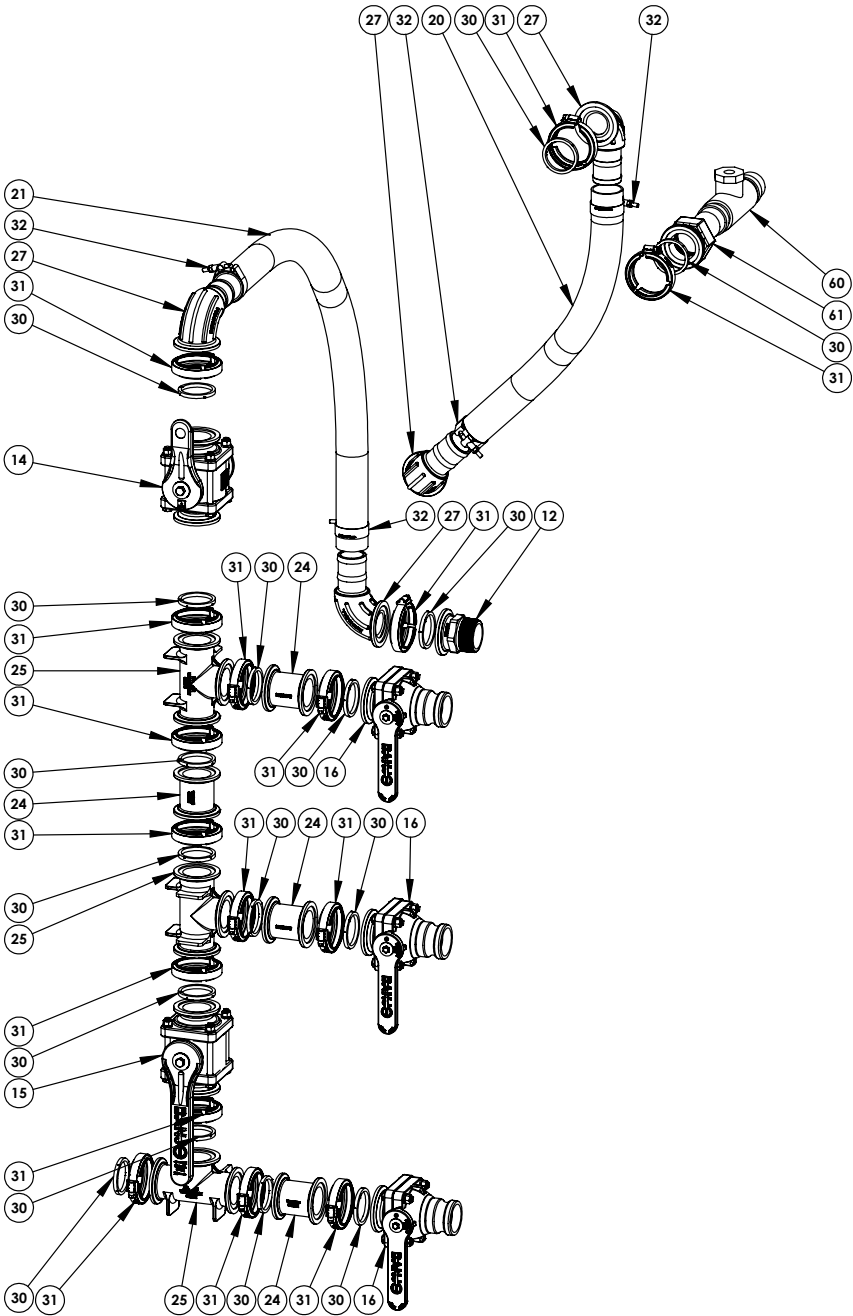
OVERVIEW



BRINE MASTER®

DETAIL VIEW A

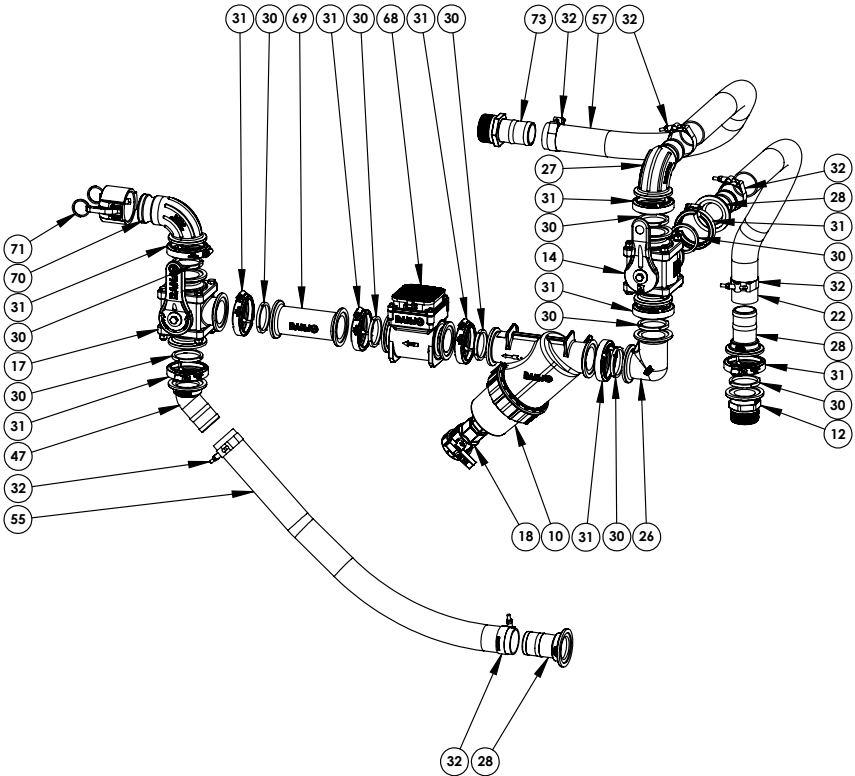
DETAIL A



BRINE MASTER®

DETAIL VIEW B

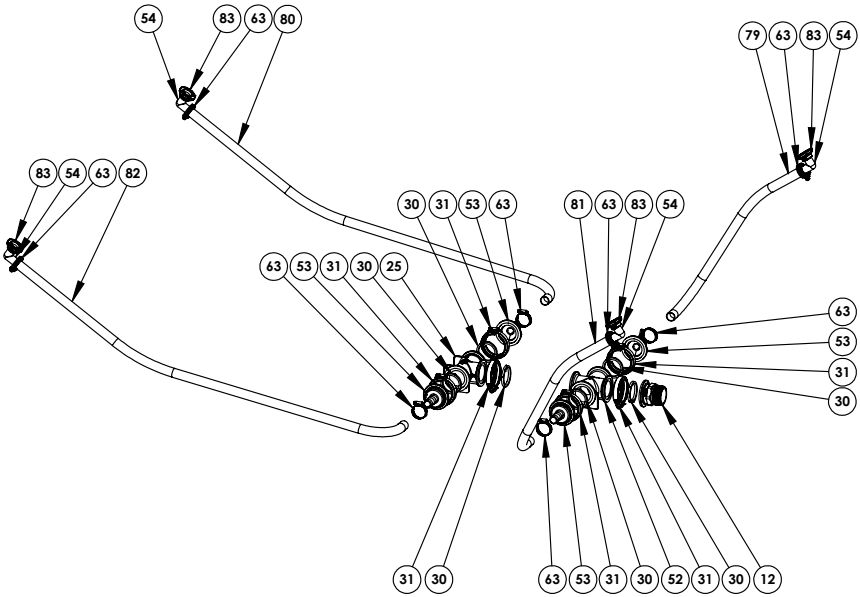
DETAIL B



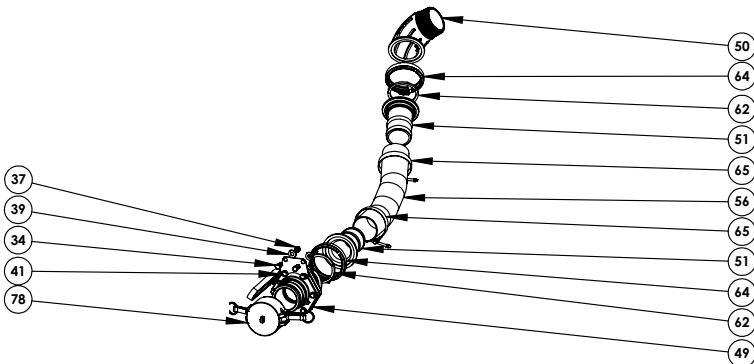
BRINE MASTER®

DETAIL VIEW C AND D

DETAIL C



DETAIL D



PARTS LIST

ITEM NO.	PART #	Description	QTY.
1	AZKI010,AZKI011,CSL C661,CSLC662,CSLC 663,CSLC666	Skid for 3000 Gal Brine Master	1
2	CSLC674	Control Panel for 3000 Gal Brine Master	1
3	CSLC675	Screen for 3000 Gal Brine Master	1
4	CSLC673	SS Stopper for 3000 Gal Brine Master	4
5	CSLC672	Bracket for 3000 Gal Brine Master	1
6	IMS008700R-NF	870 Gal Flat Bottom Storage Tank	1
7	AMB3000	Brine Master 3000 Hopper	1
8	AMBMSG3000	Brine Master 3000 Hopper Spill Guard	2
9	CB234PPE51	2-in Poly Pump 5Hp Electric Motor Single Phase	1
10	CBMLS2216	MLS222 Y-Strainer 16 Mesh	1
11	CPFTGE5	4-in Rainharvest Multi-tite Gaskets	4
12	CBM220MPT	2-in FP Manifold x 2-in Male Thread	3
13	CBTF075	3/4-in Poly Tank Fitting	2
14	CBMV220BLSH	2-in FP Bottom Load Manifold Valve w/ SH Handle	2
15	CBMV220CF	2-in Full Port Manifold Flange Ball Valve	1
16	CBMVSF220FP	2 IN FP Manifold x Male Adaptor	3
17	CBMV220SL	2-in FP Side Load 3-way Manifold Valve	1
18	CVPBV2100	1-in FPT Union Valve	1
19	CFPS40PPVC	4-in PVC Pipe Sch40 13.5-inches long	2
20	CLUEPEB10009	2-in Hose (Control Valve to Pump Suction)	1
21	CLUEPEB10009	2-in Hose (Tank to Control Valve)	1
22	CLUEPEB10009	2-in Hose (Pump Discharge to Control Valve)	1
23	CLUVGC03504	.75-in Clear Vinyl Tubing	1
24	CBM220CPG	2 x 2 Full Port Flange	4
25	CBM220TEE	2 Manifold Tee - 220 Series	4
26	CBM220CPG90	2" Full Port x 2" Full Port Manifold Coupling 90°	1
27	CBM220BRBSWP90	2" Full Port Flange x Hose Shank Sweep	5
28	CBM220BRB	2 Full Port Flange x 2 Hose Barb	3
29	CFPE04M04B	3/4 MNPT x 3/4 Hose Barb 90	1
30	CBM221G	2" FP Manifold Gasket with Rib	32
31	CBFC220	2 SS Flange Worm Screw Clamp	32
32	CBTC231	2" T-Bolt Hose Clamp 2.31 MIN	10
33	CHBS041523	7/16-14 X 5 STAINLESS STEEL HEX HEAD BOLT 18-8(304)	8
34	CHBS030523	3-8" x 1" SS Hex Bolt	52
35	CHNSN0323	3/8" SS Nylock Nut	34

BRINE MASTER®

PARTS LIST

ITEM NO.	PART #	Description	QTY.
36	CHNS0423	7/16 Nylock Nut	8
37	CHNSH0323	3/8" SS Hex Nut	18
38	CHWZF045	7/16 flat washer	16
39	CHWSF033	3/8 SS Flat washer	102
40	CEC016	EX200RS (Toroidal /Inductive Conductivity Sorsor)	1
41	CBV25270	Straight Mounting Bracket	1
42	CBBF220BD	2 Thread Full Port Flange	1
43	CBSL07590	3/4 Poly Street Elbow 90	1
44	CFPN04M04M	3/4 Short Nipple	1
45	CVPBV234	3/4 FPT Union Valve	1
46	CFPS04M04B	3/4 MNPT To 3/4 Hose Shank	1
47	CBM220BRB45	2 Full Port x 45 HB	1
48	CBBF335	3 Bolted Tank Flange 3 1/2" Thd Bolts	1
49	CBMVSF300	3 Stubby Valve QDC x Flange Long Handle	1
50	CBM300MPTSWP90	3 Flange x 3 Male NPT Thread Sweep	1
51	CBM300BRB	3 Flange x 3 Hose Barb	2
52	CBM220CR	2-in Full Port Flanged Cross	1
53	CBM220100BRB	2-in Full Port Flange x 1-in Hose Barb	4
54	CBM100BRB90	1" Manifold x 90 Hose Barb	4
55	CLUPEB10009	2-in Hose (Discharge to Storage)	1
56	CLUPEB08513	3-in Hose (Hopper Drain)	1
57	CLUPEB10009	2-in Hose (Control Valve to Poly Hopper)	1
58	CFCW001	Clamp For 3/4" Hose	2
59	CBMBF100	1-in Flange x 1-in Female Thread Bolted Tank Fitting with EPDM	4
60	CEC017	FC95C TCS3000 Series Flow Cell 2-in	1
61	CBM220FPT	2 IN FP Manifold x 2 IN Female Thread	1
62	CBM301G	3" Manifold Gasket with Rib	2
63	CFCW003	Clamp For 1" Hose	8
64	CBFC300	3-in Worm Screw Clamp	2
65	CBTC343	3" T-Bolt Hose Clamp 3.43 MIN	2
66	CFPS40PPVC	4-in PVC Pipe Sch40 - 10.5 inches long	2
67	CEC027	4-in Flexible Coupling	2
68	CBMFM220	2-in Full port manifold flowmeter	1
69	CBM220CPG6	2 x 2 Full Port Flange x 6"	1
70	CBM220ASWP90	2-in Full port flange x Male adapter sweeped	1

PARTS LIST

ITEM NO.	PART #	Description	QTY.
71	CB200CAP	2-in Cap	1
72	CBTF200	2 Poly Tank Flange Assembly	1
73	CBHB200	2 Male Thread x 2 Hose Shank	1
74	CFSE05F05M	1-in MPT x 1-in FPT 304SS 90 Deg Elbow	4
75	CV3RB10034	Reducer Bushing 1" MPT X 3/4" FPT	4
76	CV3RB3414	3/4 x 1/4 Reducer Bushing	4
77	CEC018	Brine Master 3000 Electrical Assembly	1
78	CB300CAP	3-in Cap	1
79	CLUESB020005	1-in EPDM Hose (Discharge to Hopper)	1
80	CLUESB020005	1-in EPDM Hose (Discharge to Hopper)	1
81	CLUESB020005	1-in EPDM Hose (Discharge to Hopper)	1
82	CLUESB020005	1-in EPDM Hose (Discharge to Hopper)	1
83	CBM102G	1-in Manifold Gasket with Skirt	4
84	CHWSF013	1/4" SS Flat Washer	8
85	CHAS010223	.25 x .75 SS HWH Slotted Screw	6
86	CPG003	1/4" Rubber Strip	1
87	CSLC700	Hopper Rubber Flap Retainer (Large)	2
88	CSLC701	Hopper Rubber Flap Retainer (Small)	4
89	CHBS012823	1.5in SS Hexagonal Head Screw	44
90	CHBS012723	1-in SS Hexagonal Head Screw	8

BRINE MASTER®

ACTIVATE YOUR 10-YEAR TANK WARRANTY

How to Activate

To double your 5-year tank warranty,
visit www.camionsystems.com/warranty/
and register this product.



Watch Instruction Videos:
www.youtube.com

Discover More Helpful Tips:
www.iceControlTraining.com



CAMION®
by Enduraplas

1 (877) 265-9929
cs@camionsystems.com
www.camionsystems.com

113 1st Street, Neche
ND 58265, USA



Discover More Helpful Tips:
www.IceControlTraining.com