

DIESEL FUEL BOSS™

OWNER'S MANUAL



Product Codes:


RDU025C10DC, RDU055C10DC, RDU075N10DC,
RDU100S10DC

Version 1.1

Copyright © Enduraplas. All Rights Reserved.



CONTENTS

INTRODUCTION	3
<hr/>	
WARNINGS - DIESEL	4
<hr/>	
GETTING STARTED 	5 - 7
<hr/>	
MAINTAINING	8
<hr/>	
TROUBLESHOOTING	9 & 10
<hr/>	
WARRANTY	11 & 12
<hr/>	
REGISTERING WARRANTY	13
<hr/>	
PARTS BREAKDOWNS - DIESEL	14 & 15

INTRODUCTION

Congratulations! You now own a Camion refueling unit. Durable design and construction assure you a lifetime of extreme performance. No refueling unit is tougher. No refueling unit will last longer.

Take a look through this owner's manual to learn how the pros use their Camion refueling unit.

Order Genuine Enduraplas Parts & Accessories:
parts.enduraplas.com



Watch Instruction Videos:
www.youtube.com/enduraplas

Discover More Helpful Tips:
blog.enduraplas.com/refueling

DIESEL FUEL BOSS™

WARNINGS ⚠

1. Do not exceed vehicle manufacturers loading, towing or lifting specifications and regulations.
2. Ensure tank is firmly secured in an appropriate manner.
3. Use caution at all times, particularly when driving on rough terrain.
4. Comply with chemical manufacturers safety requirements and all relevant legislations.
5. ALWAYS keep tank tightly covered, to prevent children or animals from entering tank.
6. Tank is not fire resistant. NEVER expose it to open flame or heat.
7. Keep sharp objects from tank. Tank could be punctured and contents could escape and cause injury to persons or property.
8. Any spillage should be cleaned up immediately and materials used in the clean-up should be disposed of safely and in accordance with any relevant local regulations.
9. In case of contact with: Eyes - Flush with plenty of water, seek medical attention. Skin - Wash with soap and water. Swallowed - Rinse mouth with water, do not induce vomiting, seek medical attention.
10. Store diesel transfer tank in a well ventilated open area. The storage shall not be in proximity to any heating or ignition source.
11. Waste material or residues shall NOT be permitted to remain in or around areas in which diesel is stored or decanted.

GETTING STARTED

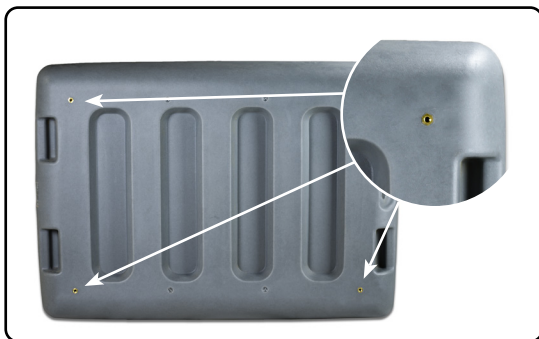
Mounting in Truck

OPTION 1:

For a temporary option, use 2 ratchet straps and the molded-in strap grooves to tie the unit down.

**OPTION 2:**

For a permanent option, use the four molded-in inserts in the base of the tank. You can bolt this to a wood or steel frame for forking in and out of truckbed.



Watch Instruction Videos:
www.youtube.com/enduraplas

Discover More Helpful Tips:
blog.enduraplas.com/refueling

GETTING STARTED

Setting up Refueling Unit

1) Open lid and unwrap battery cables.



2) Route battery cables up to battery on vehicle and hookup black clip to negative and red clip to positive battery terminals.

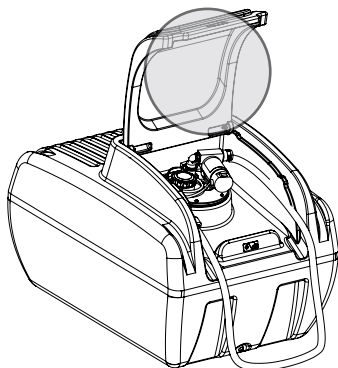


3) Remove fill cap and put fuel in unit through fill port.



4) Unit should be ready to turn on pump and discharge fuel using automatic shutoff nozzle.

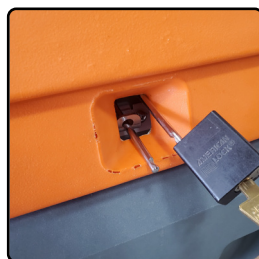


GETTING STARTED**Locking the Lid**

1) Slightly lift up the lid so you can insert the shackle through the hole in the lock tab. This will allow room to get the lock shackle slid into position.



2) Insert the shackle through the hole from behind.



3) Push the lid completely shut and insert the shackle into the padlock to lock your transfer tank.



Diesel Fuel Boss™

The information applies in normal operating conditions. The specific intervals must be shortened accordingly for longer daily working hours. If the machine is only used occasionally, the intervals can be extended accordingly.	Complete machine	Visual inspection (condition, leaks)	X	Before starting work	At the end of work and/or daily	Weekly or every 40 operating hours	After the first 5 operating hours	Every 250 operating hours o once a year	If damaged	If required	
		Clean			X						
	Tank, hoses and fittings	Clean			X						
		Clean									X
	Dispensing Nozzle	Replace							X		
		Retighten									X
	Safety labels	Replace								X	
		Maintain								X	
	Pump										
	Read and follow all maintenance and care instructions in the Pump manual.										

TROUBLESHOOTING

CONDITION	POSSIBLE CAUSE	REMEDY
Pump does not run	1) No electrical power to pump	1) Check electrical connections, extension cable (If applicable) and fuse.
Pump runs slowly with low fuel flow	1) Low voltage supply	1) Test power supply and ensure adequate voltage.
Pump runs, but no fuel delivery	1) Tank level too Low 2) Clogged suction line or filter 3) Air leak in suction side 4) Dispensing nozzle malfunctioning 5) Damaged rotor/ vanes 6) Pump is not priming	1) Add fuel to tank 2) Clean suction line and filters. 3) Check all fittings for leaks - tighten clamps. 4) Remove nozzle from hose and test pump. 5) Remove end cover by first undoing the three socket head screws and lifting off cover. Inspect for damage. 6) With pump running, pull handle on discharge nozzle and lower nozzle below level of pump to let gravity allow the fuel to start flowing

CONDITION	POSSIBLE CAUSE	REMEDY
Pump makes squealing/scratching sound while running	1) Dirt or debris entering pump chamber	1) Remove end cover by first undoing the three socket head screws and lifting off cover. Clean impeller and vanes taking care to remove any particles caught between the ends of the vanes and the housing. Take care not to over tighten screws when reassembling.

WARRANTY

CAMION® LIMITED WARRANTY:

Camion®, a division of Enduraplas, LLC ("Camion®") agrees to provide this non-transferable, non-assignable limited warranty ("Limited Warranty") to the original end-user purchaser ("Buyer") only of registered Camion® products ("Camion® Products") pursuant to the terms and conditions provided herein. By accepting delivery of Camion® Products the Buyer likewise agrees to the written terms and conditions of this Limited Warranty. This Limited Warranty gives the Buyer specific legal rights and the Buyer may have other rights that vary from state to state.

A. LIMITED WARRANTY COVERAGE

Camion® Products Complete Product Limited Warranty – Subject to the terms and conditions of this Limited Warranty, Camion® warrants to the Buyer of Camion® Products that it will be free from defects in workmanship for a period of two (2) Winter Seasons after the date of original purchase. Winter Season means October 1 through March 31 of any given year. At its sole option, Camion® will repair or replace defective parts at no charge for parts and labor.

Camion® Products Proprietary Parts and Frames Limited Warranty – Notwithstanding the foregoing and subject to the terms and conditions of this Limited Warranty, Camion® warrants to the Buyer of Camion® Products that the parts and frames will be free from material defects in materials or workmanship for a period of one (1) Year after the date of original purchase. At its sole option, Camion® will repair or replace defective parts at no charge for parts, but labor shall be the responsibility of the Buyer.

Third Party Parts and Components – This Limited Warranty does not cover certain third party manufactured parts and components, as such parts and components are covered by separate limited warranties provided by such third party manufacturers. For information regarding said limited warranties, please see each individual third party limited warranty.

Camion® Products Polyethylene Tank Limited Warranty - This Limited Warranty does not cover Camion® Products Polyethylene Tank(s), as such materials are covered by a separate limited warranty provided by Enduraplas®, LLC. For information regarding said limited warranty, please see the Enduraplas® Limited Warranty.

B. WHAT THIS LIMITED WARRANTY DOES NOT COVER

Camion® does not provide any warranty coverage, nor have any liability or responsibility for any defects, costs, expenses, or damages relating to any of the following:

- Expendable parts, such as nuts, bolts, etc. or any parts not furnished by Camion® or any damage caused by such parts.
- Airborne chemicals, road debris, salt, hail, floods, fire, windstorms, lightning or other acts of nature and other environmental conditions.
- Water contamination.
- Any part or product installed, repaired, or altered by anyone other than a Camion® Products authorized dealer or any damage caused by such parts or products.
- Normal wear and tear.
- Normal maintenance services.
- Incidental or consequential damages, including but not limited to inconvenience, transportation, personal injury, loss of property or loss of revenue.
- Parts or products that have been subject to abuse, negligence, accident, theft, tampering, misuse, neglect, corrosion, mishandling, improper installation, lack of or improper maintenance, care or storage.

WARRANTY

Installation of Camion® Products to a vehicle, including modification of Camion® Products or any such vehicle, is entirely at the Buyer's risk and expense, and compliance with motor vehicle regulations is the responsibility of the Buyer. Camion® is not responsible for any damage whatsoever to vehicles caused by installation or use of Camion® Products equipment.

Camion® Products are not intended for personal, family or household use and, as such, this Limited Warranty does not cover such use.

C. OTHER WARRANTIES DISCLAIMED AND EXCLUDED

THERE ARE NO WARRANTIES, EXPRESS OR IMPLIED, WHICH EXTEND BEYOND THE LIMITED WARRANTY HEREIN STATED, AND EXCEPT TO THE EXTENT PROHIBITED BY APPLICABLE LAW, CAMION® EXPRESSLY DISCLAIMS AND EXCLUDES ANY AND ALL OTHER WARRANTIES INCLUDING BUT NOT LIMITED TO WARRANTIES OF MERCHANTABILITY, FITNESS FOR PARTICULAR PURPOSE, INFRINGEMENT, CUSTOM OR USAGE OF TRADE, AND COURSE OF DEALING. NO AGENT, EMPLOYEE OR REPRESENTATIVE OF CAMION® HAS AUTHORITY TO BIND CAMION® TO ANY REPRESENTATION OR WARRANTY EXCEPT AS STATED IN THIS LIMITED WARRANTY.

D. PROCEDURE FOR OBTAINING WARRANTY COVERAGE

To submit a Limited Warranty claim, the Buyer must notify Camion® of the claimed defect within ten (10) days that the defect becomes known, in writing, at: cs@camionsystems.com. The original invoice or other similar proof of purchase of the applicable product or part must be provided by the Buyer to Camion® when making a claim under this Limited Warranty. Warranty claims must be received in writing by Camion® within the Limited Warranty period. To obtain service pursuant to this Limited Warranty, the Buyer must return the defective product or part to any Camion® Products authorized dealer (preferably, the dealer from whom the product or part was purchased). The Buyer shall be responsible for all transportation expenses to and from said dealer and accepts all risk of any damage in transit. To locate the nearest Camion® Products authorized dealer, please see the dealer locator at www.camionsystems.com.

The Limited Warranty is given solely to the Buyer and may not be transferred or assigned to any other person.

If you have questions about this Limited Warranty, contact Camion® at: cs@camionsystems.com.

E. GOVERNING LAW

This Limited Warranty will be governed by the laws of the State of North Dakota, without giving effect to any choice of law rule that would cause the application of the laws of any other jurisdiction. Any disputes regarding matters relating to this Limited Warranty will be resolved exclusively in the State of North Dakota and all parties consent to such jurisdiction. RIGHTS TO A JURY TRIAL, CLASS ACTION AND CONSOLIDATED DISPUTE RESOLUTION PROCEEDINGS ARE HEREBY WAIVED TO THE FURTHEST EXTENT PERMITTED BY LAW.

F. DISCLAIMER OF EXPENSES AND DAMAGES

The performance of necessary repairs and replacements, as determined by Camion® in its discretion, is the sole and exclusive remedy under this Limited Warranty or any implied warranty. Camion® does not authorize any person, including Camion® Products authorized dealers, to create for it any other obligation or liability in connection with Camion® Products. Except to the extent prohibited by applicable law, Camion® shall not be liable for personal injury, property damage, loss of liquid, loss of profit, incidental, consequential, contingent or special damages, or any other damages resulting from the use of, or inability to use, Camion® Products whether based on breach of this written Limited Warranty or any implied warranty, breach of contract, negligence or strict liability.

REGISTERING WARRANTY

Serial Number Location

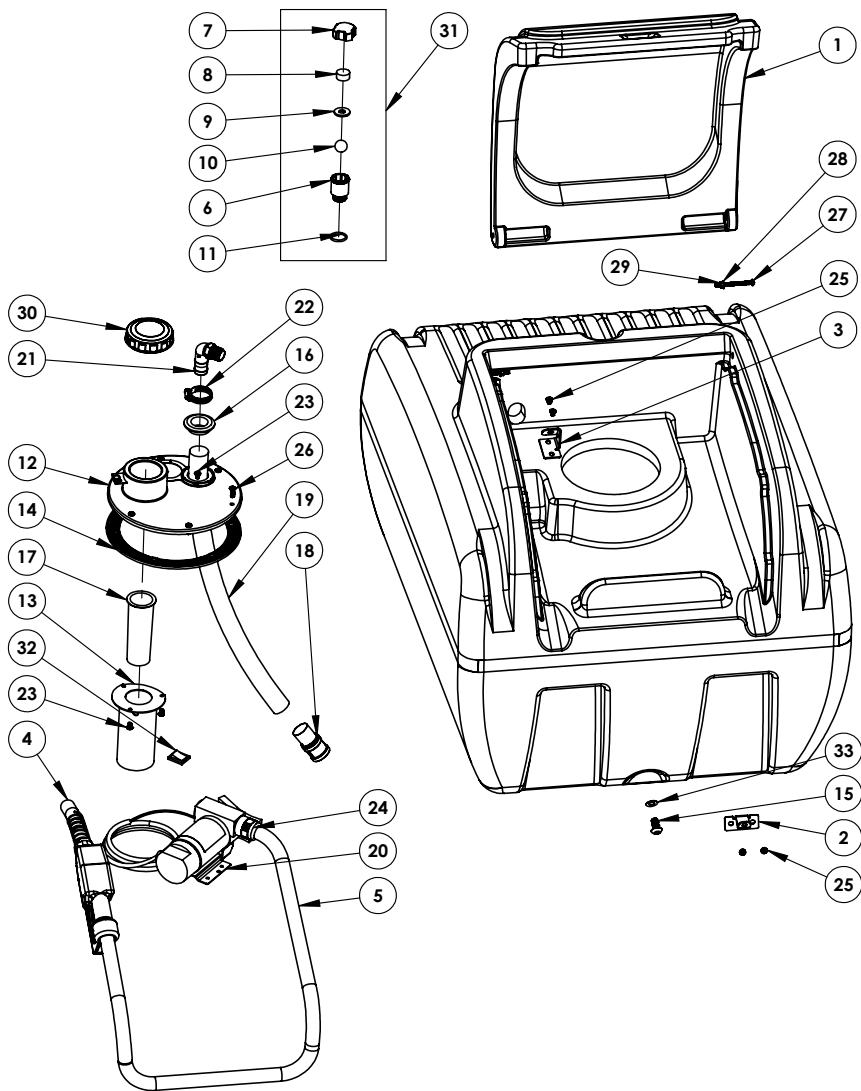


How to Activate

To double your 5-year tank warranty, visit enduraplaswarranty.com and register this product.

DIESEL OVERVIEW

DIESEL FUEL BOSS™



PARTS LIST

ITEM NO.	PART #	DESCRIPTION	QTY.
1	AMRDPC	wide lid for DL/DEF	1
2	AZKR0001	DIESEL DEF TANK COVER LATCH REV 4	1
3	AZKR0004	DIESEL DEF TANK NOZZLE BRACKET REV 2	1
4	ARDNA01	Diesel Auto Shut Off Nozzle	1
5	CDHN01	Wide-16 Foot DL discharge hose	1
6	CEBP01	Breather Base	1
7	CEBP01	Breather Top	1
8	CDBF	Foam Filter-Breather	1
9	CDGN02	32x14x4 Breather O-Ring	1
10	CEBP01	Polypropylene Ball for Breather	1
11	CDON04	O-Ring for Breather	1
12	CDLA01	Die Cast DL Lid with Bung	1
13	CDFA01	Die Cast DL Lid Tube	1
14	CDGN01	277 x 4 MM Ribbed DL Gasket	1
15	CHMS050523A	1/2 x 1 Panhead hex drive bolt	1
16	CDGN03	25MM Universal Seal	1
17	CDSA01	Strainer Mesh	1
18	CDF01	DL Mesh Filter & 1" Socket	1
19	CLUOLO07005	1 PVC DL Suction Hose	1
20	ARDPDP01	10GPM 12V DieselFlo Pump	1
21	CFPE04M05B	.75MPT x 1 HB 90	1
22	CFCW003	Clamp For 1" Hose	1
23	CHMZ709025	M6 x 10MM Phillips Lid Tube Bolt	4
24	CDSB01	.75 x .75 DL Swivel	1
25	CHMZ010135	.25 x .375 L Panhead Machine Screw	4
26	CHMS702033	6 x 20MM SS Panhead Machine Screw	6
27	CHMZ011325	.25 x 3 Panhead phillips	2
28	CHWZF015	1/4" Flat Washer	2
29	CHNZN0125	1/4 Nylock nut	2
30	CDCA01	Diesel Cap	1
31	CPA0009	Complete Poly Breather	1
32	CDDP002	DieselFlo Pump switch	1
33	CEGN01	Seal Washer .5 IN Seal Drain Plug	1



CAMION

by Enduraplas

1 (877) 265-9929

cs@camionsystems.com

www.camionsystems.com

113 1st Street, Neche
ND 58265, USA

Discover More Helpful Tips:

www.IceControlTraining.com