

ICE MASTER® E-SERIES

OWNER'S MANUAL




Product Codes:
IME250, IME300
IME500

Version 1.7

Copyright © Enduraplas. All Rights Reserved.



CONTENTS

INTRODUCTION	3
<hr/>	
WARNINGS 	4 & 5
<hr/>	
GETTING STARTED	6 - 15
<hr/>	
CALIBRATING	16 & 17
<hr/>	
MAINTAINING	18 & 19
<hr/>	
TROUBLESHOOTING	20 & 21
<hr/>	
PARTS BREAKDOWNS - E-SERIES	22 - 37
<hr/>	
WARRANTY	38 - 42

INTRODUCTION

Congratulations! You now own an Camion™ sprayer. Durable design and construction assure you a lifetime of extreme performance. No sprayer is tougher. No sprayer will last longer.

Take a look through this owner's manual to learn how the pros use their Camion™ sprayer.



Watch Instruction Videos:
www.youtube.com

Discover More Helpful Tips:
www.IceControlTraining.com

WARNINGS

1. Do not exceed vehicle manufacturers loading, towing or lifting specifications and regulations.
2. Ensure tank is firmly secured in an appropriate manner.
3. Use caution at all times, particularly when driving on rough terrain.
4. Comply with chemical manufacturers safety requirements and all relevant legislations.
5. ALWAYS keep tank tightly covered, to prevent children or animals from entering tank.
6. Tank is not fire resistant. NEVER expose it to open flame or heat.
7. Keep sharp objects from tank. Tank could be punctured and contents could escape and cause injury to persons or property.
8. This tank can be used only with polyethylene compatible liquids. If you are uncertain, ask chemical supplier if material can safely be stored in a polyethylene tank.
USE OF TANK WITH ANY OTHER MATERIAL COULD CAUSE TANK TO FAIL, RESULTING IN INJURY OR PROPERTY DAMAGE.
9. DO NOT MIX CHEMICALS. THIS CAN RESULT IN DAMAGE TO THE TANK OR NEARBY PERSONS OR PROPERTY.
10. Clean out tank before changing chemicals OTHERWISE A DANGEROUS MIXTURE OF CHEMICALS COULD CAUSE DAMAGE TO PERSONS, TANK OR PROPERTY.
11. Regular service and maintenance is the Owner's responsibility and is a condition of your warranty.
12. FAILURE TO COMPLY WITH ALL WARNINGS AND INSTALLATION INSTRUCTIONS WILL VOID WARRANTY.

13. No modifications and/or alterations may be made to this sprayer. Any such modifications not only void the sprayer warranty but can make the unit dangerous to anyone operating the pump.
14. Always inspect hoses and piping to avoid burst injuries.
15. DO NOT turn suction valve off while pump is running.
NEVER RUN PUMP DRY.

COMPATIBLE LIQUIDS

Calcium Chloride Brine, Salt Brine and Premium Branded Liquids.

⚠ Caution: Brine that contain tacky substances or solid particles may clog pumps and nozzles. These are not recommended.

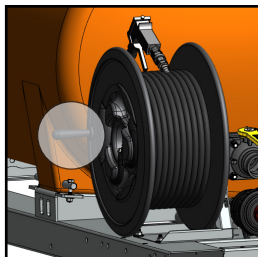
⚠ Warning: DO NOT USE any products that contain petroleum or petroleum by-products of any kind. These destroy seals and will void warranty.

Discover More Helpful Tips:
www.IceControlTraining.com

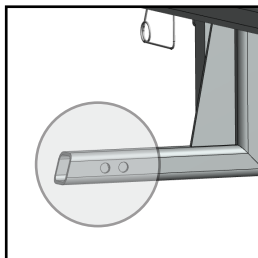
GETTING STARTED

Setting-up the Sprayer

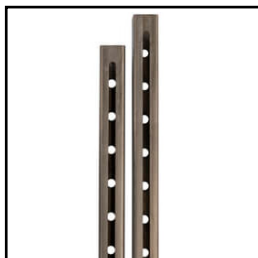
1) Wind the hose reel handle into place.



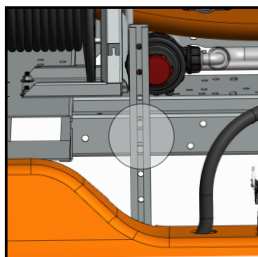
2) If you ordered the optional hitch mount boom for your Ice Master® E-Series unit, you can mount it to the hitch on your pickup.



3) If you wish to mount a boom to the frame of unit, add the bolts and plastic washers to each of the boom brackets.



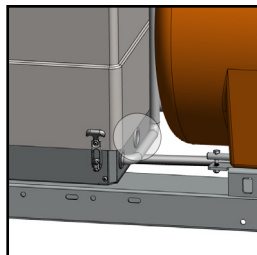
4) Connect the brackets to the frame and loosely secure them in order to mount the boom.



GETTING STARTED

Setting-up the Sprayer

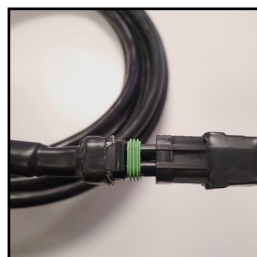
5) Feed the wire harness through the hole in the back of the metal box.



6) Connect the cables to the pumps. Make sure to plug in the correct connectors to the corresponding pumps as shown in this image.



7) Run the power cable up to your cab and connect it to your controller.



8) Connect the controller to the power cables.



GETTING STARTED

Setting-up the Sprayer

9) Hook up the power cables to your battery terminals.



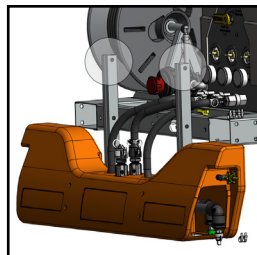
Watch Instruction Videos:
www.youtube.com

Discover More Helpful Tips:
www.IceControlTraining.com

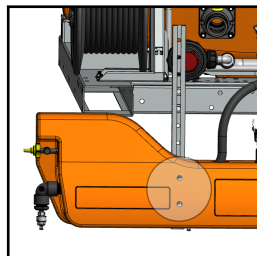
GETTING STARTED

Connecting the Boom

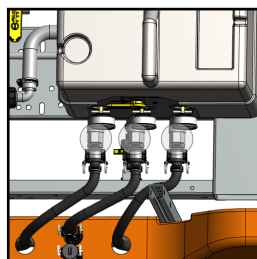
1) Slide the boom on to the quick attach brackets.



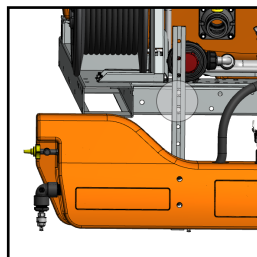
2) Tighten the hardware making sure the square neck on the carriage bolt is fully inserted through the slot.



3) Take the hose, connect it to its fitting, and tighten it using the camlock.



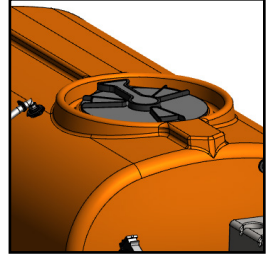
4) Once the boom is secure, tighten the hardware on the boom brackets to make sure they are also secure.



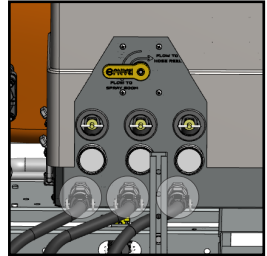
GETTING STARTED

Operating the Sprayer

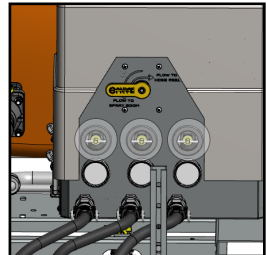
1) You will need to complete a liquid re-circulation test before using the sprayer. Start by filling the tank at least 1/4 full of water.



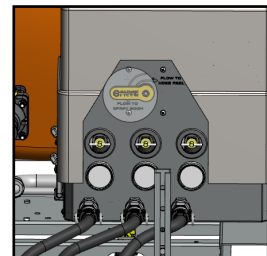
2) Make sure the cam lock caps are on your right, left, and center boom ports.



3) Turn all three pressure regulators **counter clockwise** until they are fully open.



4) Switch the yellow handle to the horizontal position labeled as “boom spray”.



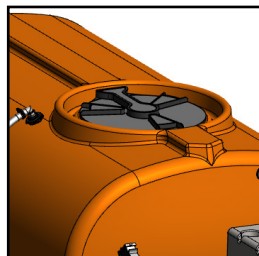
GETTING STARTED

Operating the Sprayer

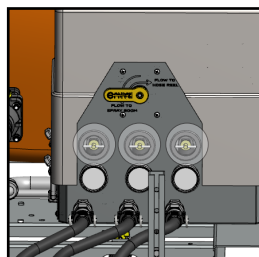
5) Switch on all three pumps, using the solenoid controller.



6) Once the pumps are running, check that water is recirculating freely back into the tank. Once liquid is circulating back into the tank, your re-circulation test is complete.



7) Turn your pumps back off. Once your pumps are no longer running tighten the pressure regulators **clockwise** until they are tight.



Important Note:

You will need to keep your pressure regulators tightened, for maximum pressure. You can expect approximately 20-30 psi from your center pump and approximately 10-15 psi from your left and right pumps.

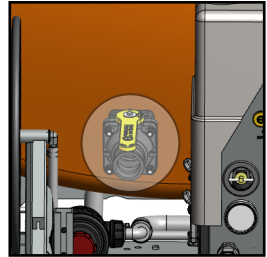
GETTING STARTED

Operating the Sprayer

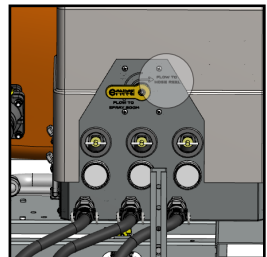
Pro Tip:

When you are spraying using all three pumps, you will be outputting approximately 10 gallons per minute.

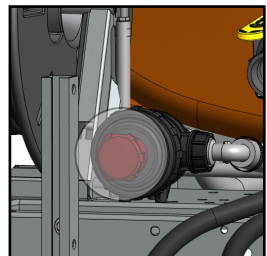
8) If you wish to fill the tank from an external source, hook up your fill hose to the external fill valve and make sure the valve is open. Then start the pump at your liquid source and it will pump liquid straight into the tank.



9) To use the spray gun, ensure the valve to the hose reel is in the open position.



10) To clean your filter during use, twist the red insert clockwise and pull it out. This will engage a valve in the filter body to stop liquid from draining out the line.



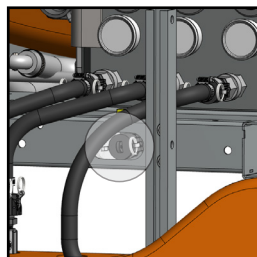
GETTING STARTED

Operating the Sprayer

11) Unscrew the cap and remove the filter for cleaning.



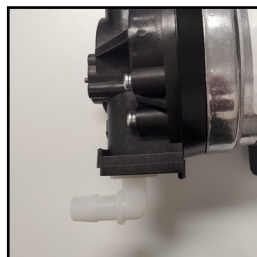
12) To drain your tank, remove the cam-lock cap on the front of the frame and open the valve. This will completely drain the tank as the hose is fed from the bottom sump in the tank.



13) If you are experiencing trouble with your center lane pump while spraying, you can exchange it with one of the side discharge pump ports to continue spraying with your center lane.



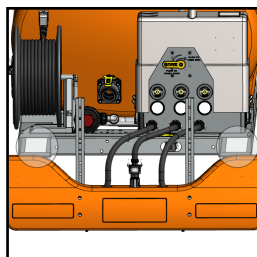
14) Simply unhook the hoses and exchange the pump hook ups.



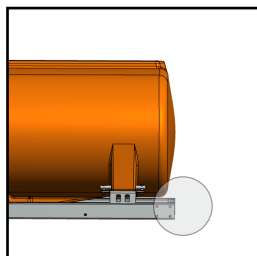
GETTING STARTED

Installing the Sprayer

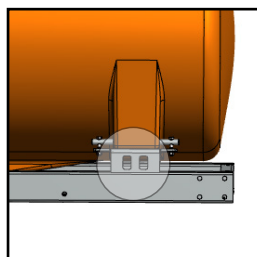
1) The two openings at the front of the frame allow you to move the unit using fork points.



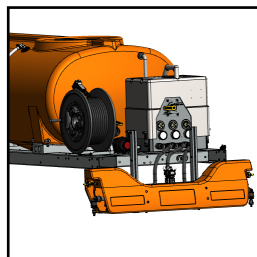
2) When loading your sprayer, we recommend placing a block of wood between your sprayer and the front of the bed of your truck.



3) On the Ice Master® E-Series, there are tie-down points on the side of the frame that allow you to strap the unit down.



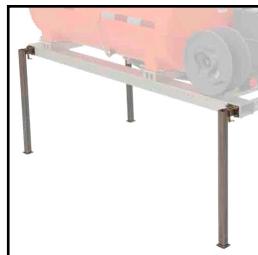
4) We recommend you run clean water through the entire unit before using salt brine to check for any unexpected leaks caused in shipping.



GETTING STARTED

Installing the Sprayer

5) If you purchased the optional storage stand, you can attach the legs with the pin system supplied.



CALIBRATING

Note: Always double check your application rates.
The rate/acre listed is only based off the center section
(not the two side nozzles)

NOZZLE COLOR	PSI	CAPACITY ONE NOZZLE IN GPM				4 MPH	6 MPH	8 MPH	10 MPH
White	20	0.56	69	46	35	28			
	30	0.72	89	59	45	36			
	40	0.80	99	66	50	40			
	50	0.88	109	73	54	44			
Green	15	0.92	114	76	57	46			
	20	1.06	131	87	66	52			
	30	1.30	161	107	80	64			
	40	1.50	186	124	93	74			

GPM = Gallons Per Minute

GPA = Gallons Per Acre

GAL/1000 FT = Gallons Per 1000 Square Feet

W = Nozzle spacing

Gallons Per Minute Formula:

$$\frac{\text{GPA} \times \text{MPH} \times \text{W (per nozzle)}}{5,940}$$

Gallons Per Minute Formula:

$$\frac{\text{GAL/1000FT} \times \text{MPH} \times \text{W (per nozzle)}}{136}$$

Gallons Per Acre Formula:

$$\frac{5,940 \times \text{GPM (per nozzle)}}{\text{MPH} \times \text{W}}$$

Gallons Per 1000 Square Feet:

$$\frac{136 \times \text{GPM (per nozzle)}}{\text{MPH} \times \text{W}}$$

Convert Acres to Lane Mile:

$$1.4545 = 1 \text{ Lane Mile}$$

Note: For video instructions on how to calibrate a boom visit
<http://bit.ly/IMS-boom-calibration>

MAINTAINING

Keeping your sprayer in good condition will help you lengthen the life of the sprayer. Everyone knows a well maintained piece of equipment ensures a longer life span. Sprayer maintenance can seem a huge task if you don't have the right tools.



Watch Instruction Videos:

www.youtube.com

Discover More Helpful Tips:

www.IceControlTraining.com

The information applies in normal operating conditions. The specific intervals must be shortened accordingly for longer daily working hours. If the machine is only used occasionally, the intervals can be extended accordingly.		Visual inspection (condition, leaks)	Before starting work	At the end of work and/or daily	Weekly or every 40 operating hours	After the first 5 operating hours	Every 250 operating hours or once a year	If damaged	If required	
		Clean	X	X						
		Clean		X						
		Drain		X						
		Clean		X						X
		Clean								X
		Replace							X	
All accessible screws and nuts	Retighten								X	
	Replace							X		
Safety labels										
Pump	Maintain							X		
		Read and follow all maintenance and care instructions in the Pump manual.								

TROUBLESHOOTING

CONDITION	CAUSE	REMEDY
Pump will not prime	1) Air leak on suction plumbing 2) Blocked/Restricted intake hose 3) Filter cap disengaged 3) Filter gasket damaged/missing	1) Tighten/replace fittings & hose clamps. Verify suction hoses are in good condition 2) Remove blockage from suction line, ensure line is not kinked 3) Lock filter cap into position 4) Replace filter gasket
Pressure drops/ fluctuates during standard operation	1) Restriction on suction line 2) Pump sucking air 3) Plugged filter 4) Damaged regulator	1) Inspect tank and suction lines and remove restriction 2) Tighten fittings 3) Remove and clean filter mesh and housing 4) Remove regulator stem and inspect for broken parts/pieces

CONDITION	CAUSE	REMEDY
Pressure gauge not registering	1) Plugged with debris	1) Un-thread, check and clean pressure gauge
Hand gun loses pressure	1) Debris in hose or nozzle 2) Pump losing prime 3) Pump pressure dropping/fluctuating	1) Un-thread nozzle tip and clean 2) See Remedy for 'Pump will not prime or loses prime' 3) See Remedy for 'Pressure drops/ fluctuates during standard operation'



Watch Instruction Videos:

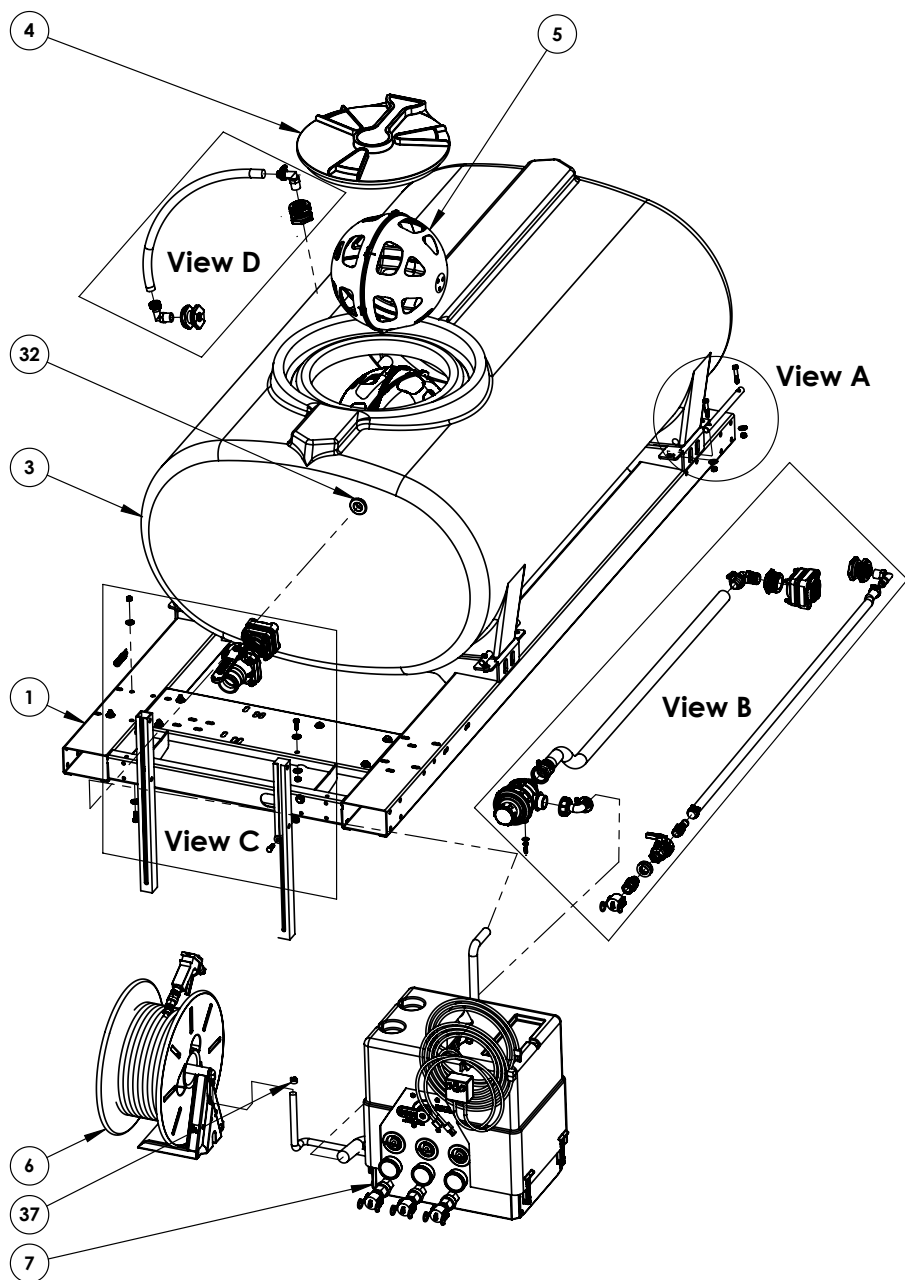
www.youtube.com

Discover More Helpful Tips:

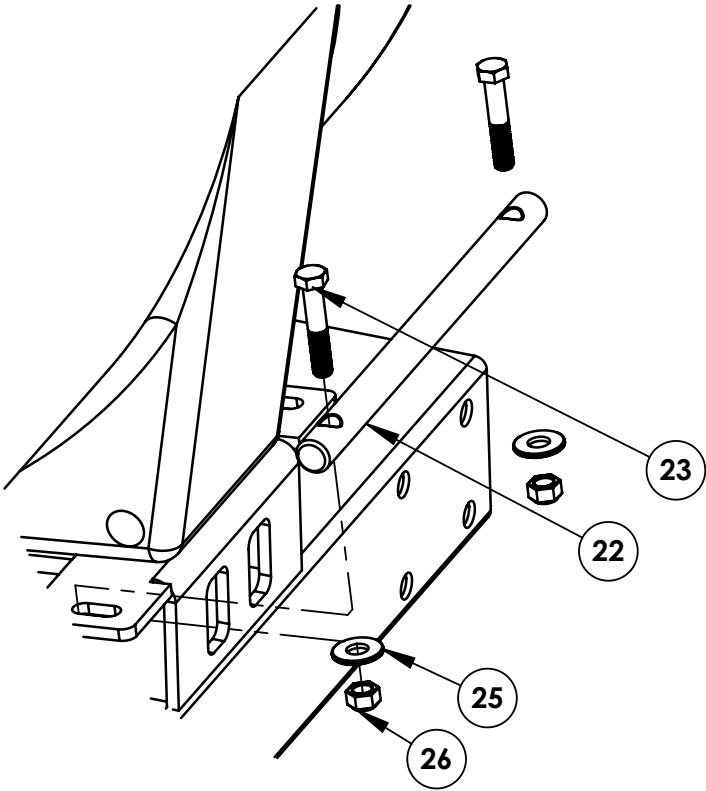
www.IceControlTraining.com

OVERVIEW

ICE MASTER® E-SERIES

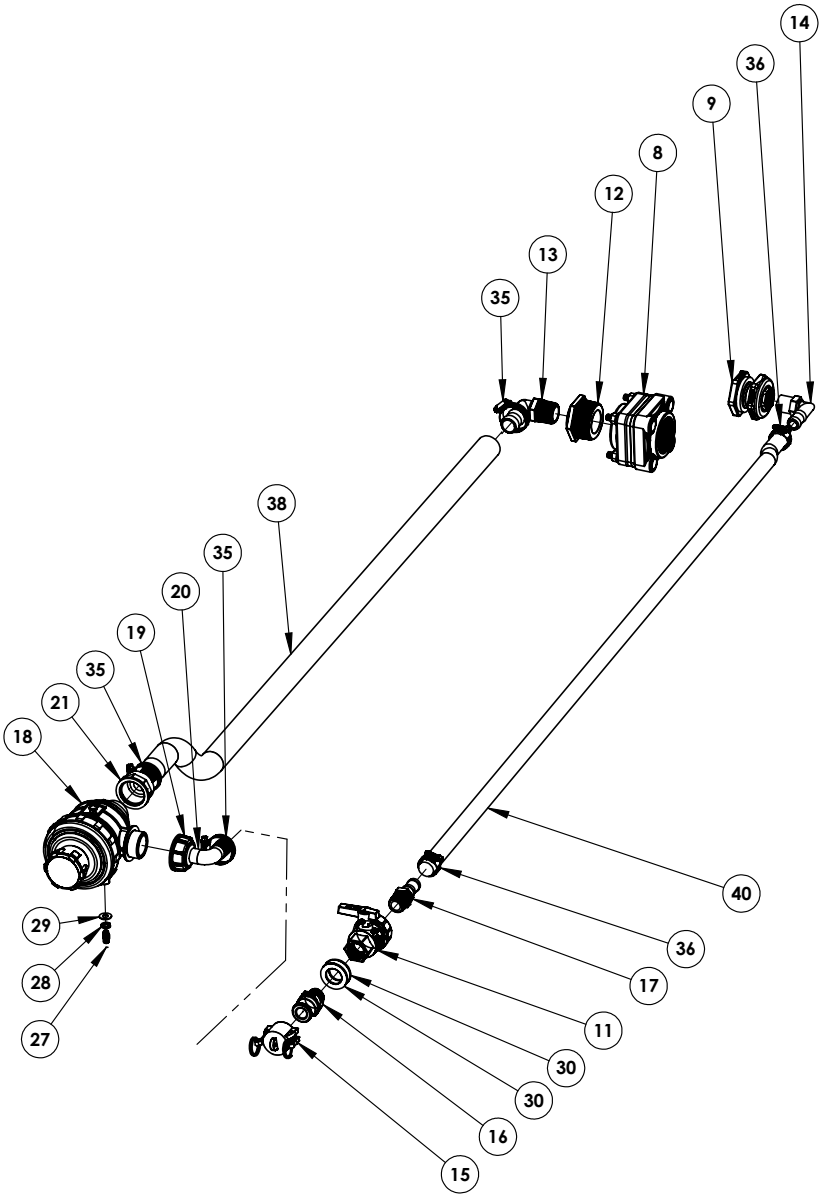


DETAIL VIEW A

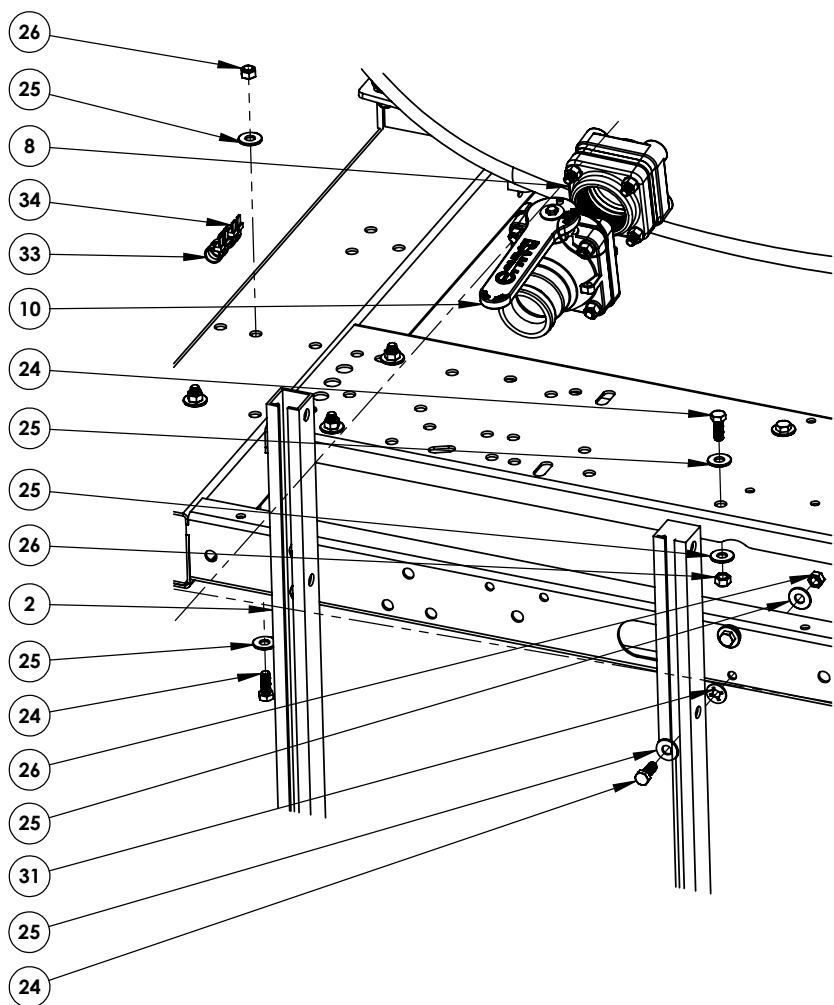


DETAIL VIEW B

ICE MASTER® E-SERIES

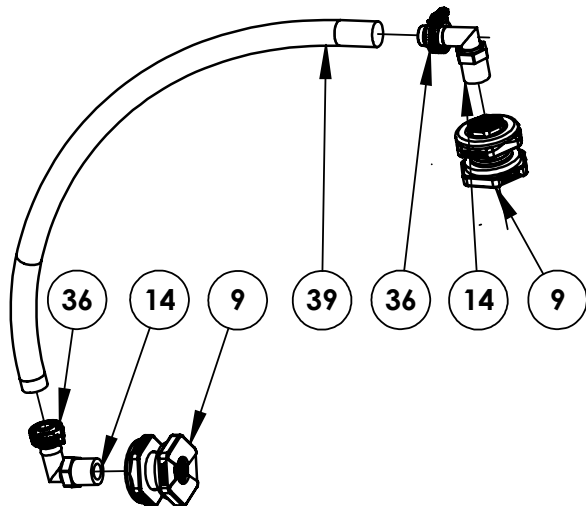


DETAIL VIEW C



DETAIL VIEW D

ICE MASTER® E-SERIES

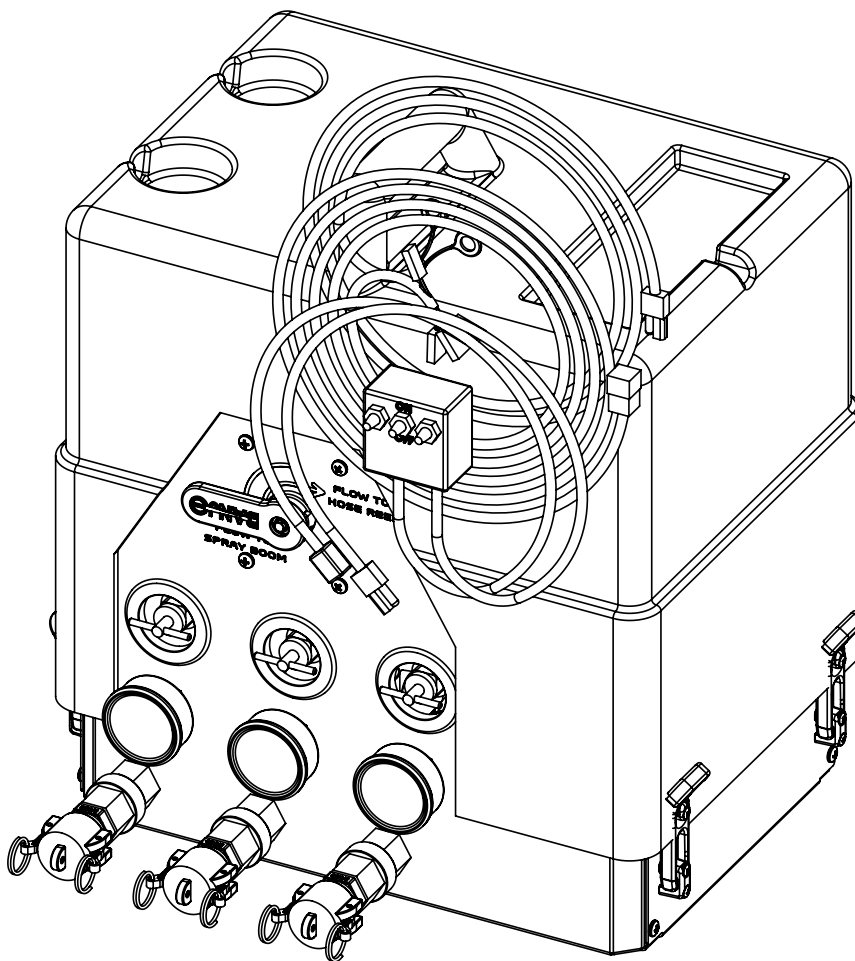


PARTS LIST

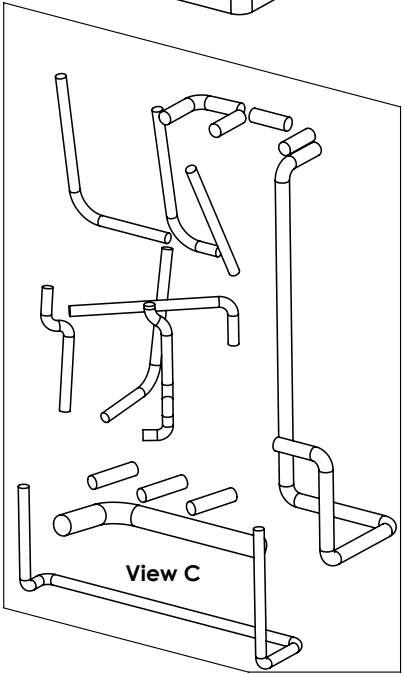
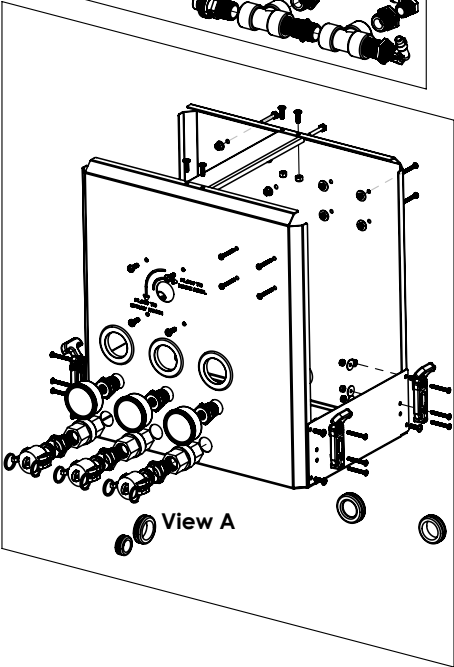
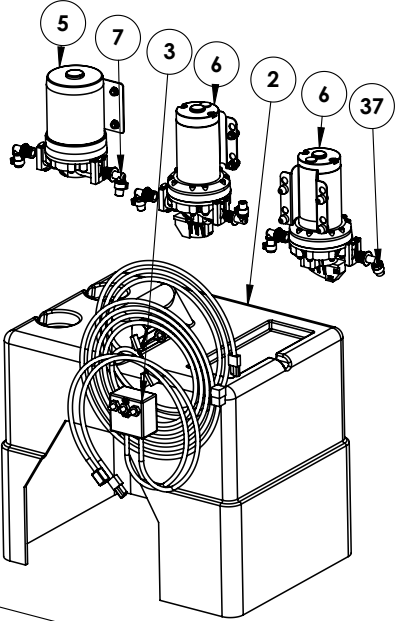
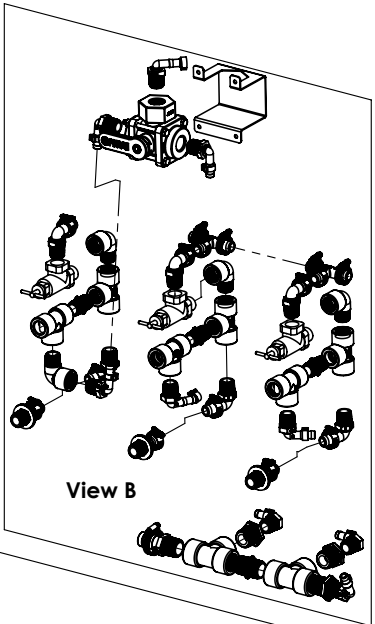
ITEM NO.	PART #	DESCRIPTION	QTY.
1	AZFGM0300	300-400Gal Fire/ProMaster Frame	1
2	AZKB0005SS	23.75" Stainless Steel Adj. Boom Bracket	2
3	THD00300OE	300 Gal Sump Tank	1
4	CFLP16HV	16 inch Hypro Lid Hinged	1
5	AVB355	STBBS35 Lg Baffle Ball	28
6	CPA0100	Ice Master Base Mount Hose Reel	1
7	IMSC1004	Ice Master Pump Box E-Series	1
8	CBBF235	2" Bolted Tank Flange	2
9	CBTF075	3/4-in Poly Tank Fitting	3
10	CBVSFMT204FP	2 FP MALE ADAPTER X 2 MALE NPT THREADS	1
11	CVPBV234	3/4 FPT Union Valve	1
12	CBBB200100	2 MPT X 1 FPT REDUCER BUSHING	1
13	CFPE05M05B	1 MNPT x 1 Hose Barb 90	1
14	CFPE04M04B	3/4 MNPT x 3/4 Hose Barb 90	3
15	CB075CAP	1/2 and 3/4 Camlock cap	1
16	CB075F	3/4 Male Adaptor x 3/4 MPT	1
17	CFPS04M04B	3/4 MNPT To 3/4 Hose Shank	1
18	CA3132453	Automatic filter 1-1/4	1
19	CA2002050	Fly-Nut 1-1/4	1
20	CA116525	Hosetail D. IN for Fly-Nut 1	1
21	CA100525	1-1/4 BSP x 1 inch hose barb	1
22	AZP02SS	11/16 x 10.5" SS tie down pin	4
23	CHBS030923	.375 x 2 Stainless Steel bolt	8
24	CHBS030523	3-8" x 1" SS Hex Bolt	12
25	CHWSF033	3/8 SS Flat washer	32
26	CHNSN0323	3/8" SS Nylock Nut	20
27	CHBS8014083	M8 x 20 MM SS hex bolt	3
28	CHWSL8083	18-8 SS LOCK WASHER	3
29	CHWSF023	5/16" SS Flat Washer	3
30	CHWSF103	1" SS Flat Washer	2
31	CHWNR03	Self retaining washer for 3/8 and M9	4
32	CPFG15	3/4 Press fit hose grommet	1
33	CXT0001	Cable Tie 14"	2
34	CXSC0002	Cable Tie 8"	2
35	CFCW003	Clamp For 1" Hose	3
36	CFCW001	Clamp For 3/4" Hose	4
37	CFCC003	Clamp for 1/2" Hose	1
38	CLUESB020005	1 IN EPDM Hose	1
39	CLUVGC03504	.75 Site Gauge Hose	1
40	CLUESB020004	3/4 Hose from .75 tank fitting to drain valve 400 Gal	1

OVERVIEW

ICE MASTER® E-SERIES

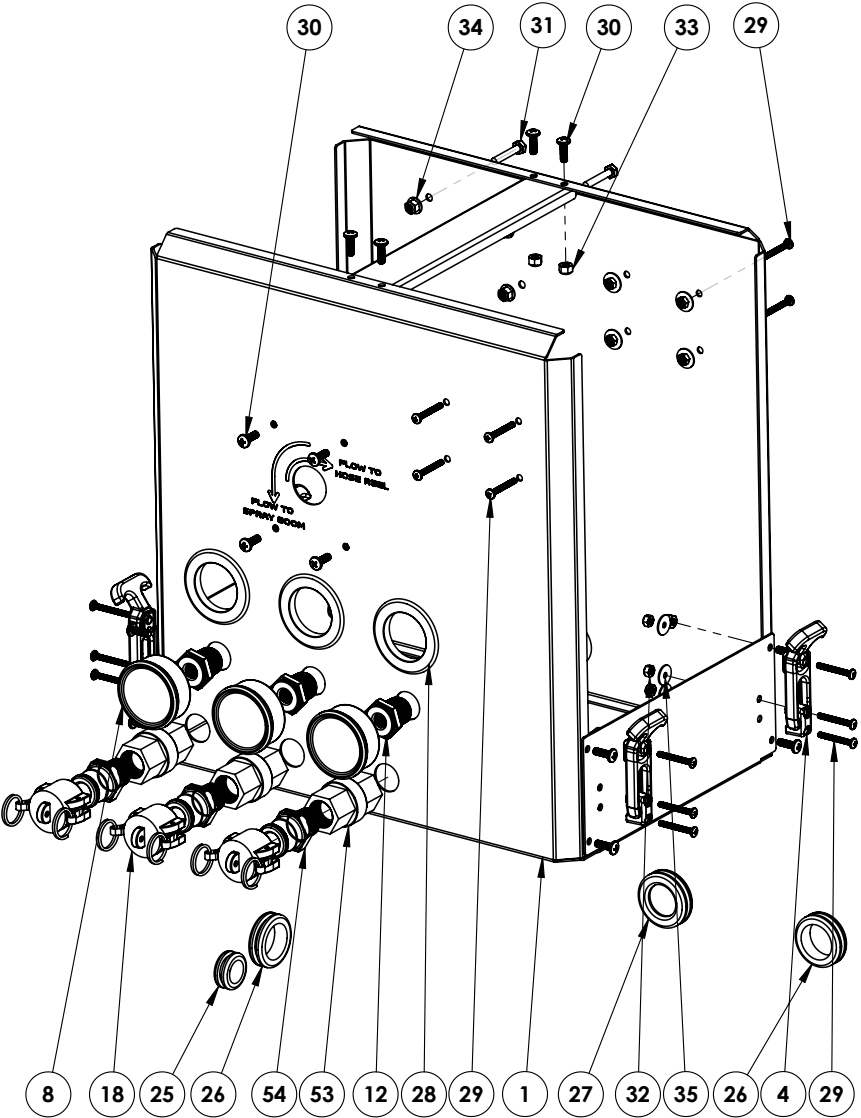


OVERVIEW

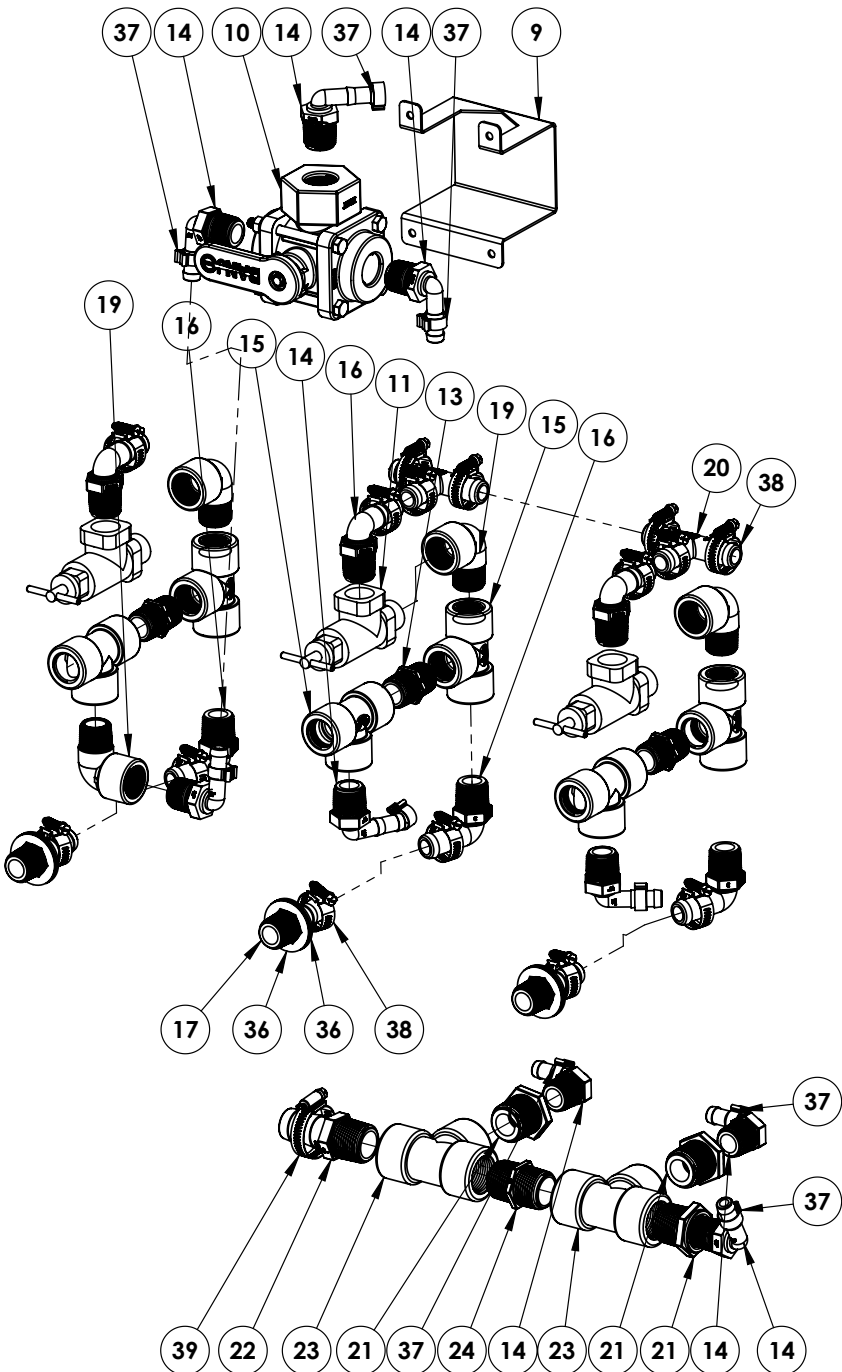


DETAIL VIEW A

ICE MASTER® E-SERIES

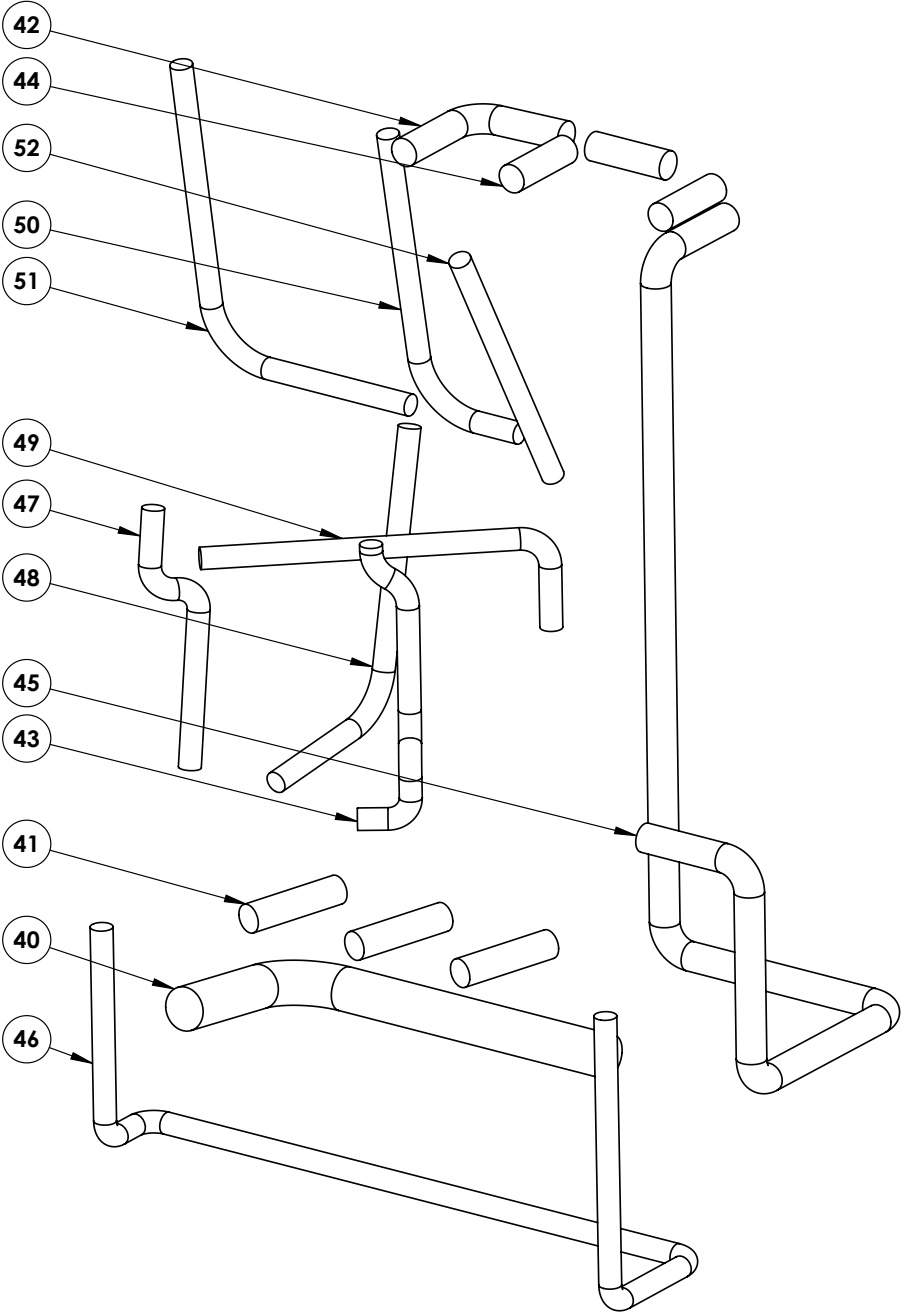


DETAIL VIEW B



DETAIL VIEW C

ICE MASTER® E-SERIES



PARTS LIST

ITEM NO.	Part #	DESCRIPTION	QTY.
1	CSLC354 CSLC355 CSLC356	Electric Deicing Pump Box	1
2	AVPC01	Pump Engine Cover	1
3	CEWCIM04	IM Wire Harness-E Series	1
4	AZKF0022	Flexible Rubber T-Handle Draw Latch	4
5	APD07G060PQB	7 GPM 60PSI, Bypass, 1/2" Quick Attach	1
6	APD05G060P	5 GPM 60 PSI QA Pump	2
7	CPPDD006	5900 Series 1/2" Elbow 90	6
8	CV2240GXB100	Pressure gauge 100psi Glycerin filled	3
9	CSLC373	Deicing electric pump box valve holder	1
10	CBV075SL	3/4 Side Load 3 Way Valve	1
11	CVRV20660158	3/4 Pressure Relief Valve	3
12	CBRB075025	3/4 MNPT x 1/4 FNPT Reducing Bushing	3
13	CFPN04M04M	3/4 Short Nipple	3
14	CFPE04M02B	3/4 MNPT x 1/2 Hose Barb 90	9
15	CBTEE075	3/4 Poly Pipe Tee	6
16	CBHB07590	3/4 Male Thread x 3/4 Hose Shank 90	6
17	CFPS04M04B	3/4 MNPT To 3/4 Hose Shank	3
18	CB075CAP	1/2 and 3/4 Camlock cap	3
19	CBSL07590	3/4 Poly Street Elbow 90	4
20	CFPT04B	3/4 Hose Barb Tee	2
21	CV3RB10034	Reducer Bushing 1" MPT X 3/4" FPT	3
22	CFPS05M05B	1 Hose Barb	1
23	CBTEE100	1 FNPT Pipe Tee	2
24	CFPN05M05M	1 Short Poly Nipple	1
25	CPFG07	Grommet for .5 hose	1
26	CTMG001	Grommet 1.5 ID	2
27	CTMG001BLANK	1.75 Round Grommet Plug	1
28	CPFG16	2 inch ID Grommet	3
29	CHSS90073	10-32 x 1.5 SS 18-8 Panhead Screw	20
30	CHMS010333	1/4" x 3/4" SS Panhead Phillips Bolt	16
31	CHBS010723	1/4 X 1-1/2 SS Bolt	4
32	CHNSN903	10-32 18-8 SS LOCKNUT	20
33	CHNSN0123	1/4" Stainless Lock Nut	20
34	CHWSF013	1/4" SS Flat Washer	4
35	CHWSK903	10 X .75 Fender Washer SS	20
36	CHWSF103	1" SS Flat Washer	6
37	CFCC003	Clamp for 1/2" Hose	15
38	CFCW001	Clamp For 3/4" Hose	15
39	CFCW003	Clamp For 1" Hose	1
40	CLUESB020005	1" EPDM Hose Filter to Manifold	1
41	CLUESB020004	.75 IN EPDM Hose To Boom Ports	3
42	CLUESB020004	.75" EPDM Hose Left Pump Return	1
43	CLUESB020004	.75 IN EPDM Hose Right pump to Right Boom	1
44	CLUESB020004	.75"EPDM Hose Center&Left Pump First Return	3

PARTS LIST

ITEM NO.	Part #	DESCRIPTION	QTY.
45	CLUESB020004	.75 IN EPDM Hose Return to Tank	1
46	CLUESB020002	.5 IN EPDM Hose 2-way valve to Hose Reel	1
47	CLUESB020002	.5 IN EPDM Hose 2-way valve to Boom Supply	1
48	CLUESB020002	.5" EPDM Hose Center pump to Center Boom	1
49	CLUESB020002	.5" EPDM Hose Left pump to 2 way valve	1
50	CLUESB020002	.5" EPDM Hose Supply Left Pump	1
51	CLUESB020002	.5" EPDM Hose Supply Center Pump	1
52	CLUESB020002	.5" EPDM Hose Supply Right Pump	1
53	CNST035	3/4" ball cone spring check valve 3#	3
54	CB075F	3/4 Male Adaptor x 3/4 MPT	3

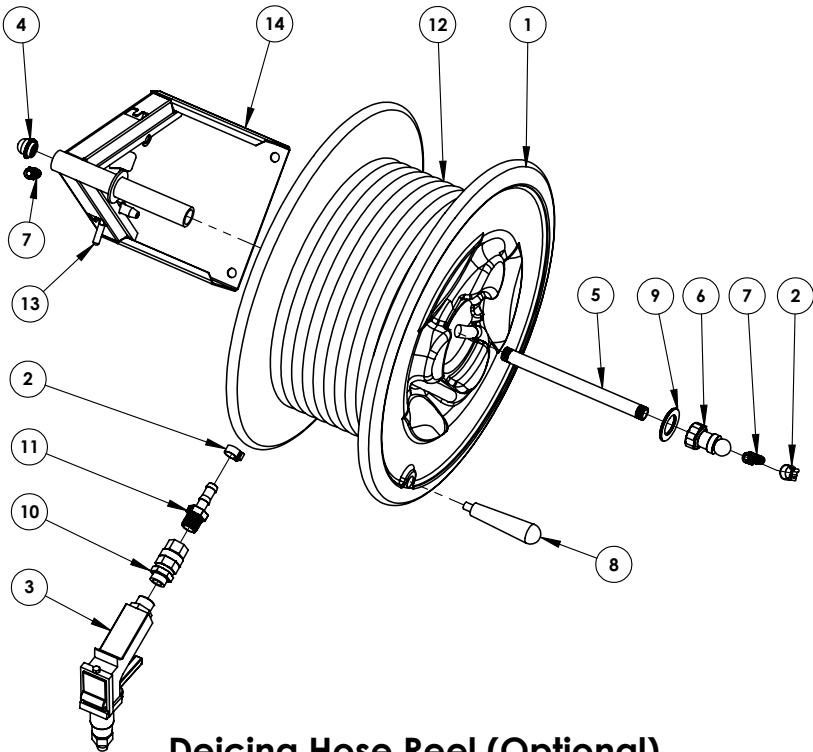


Watch Instruction Videos:
www.youtube.com

Discover More Helpful Tips:
www.IceControlTraining.com

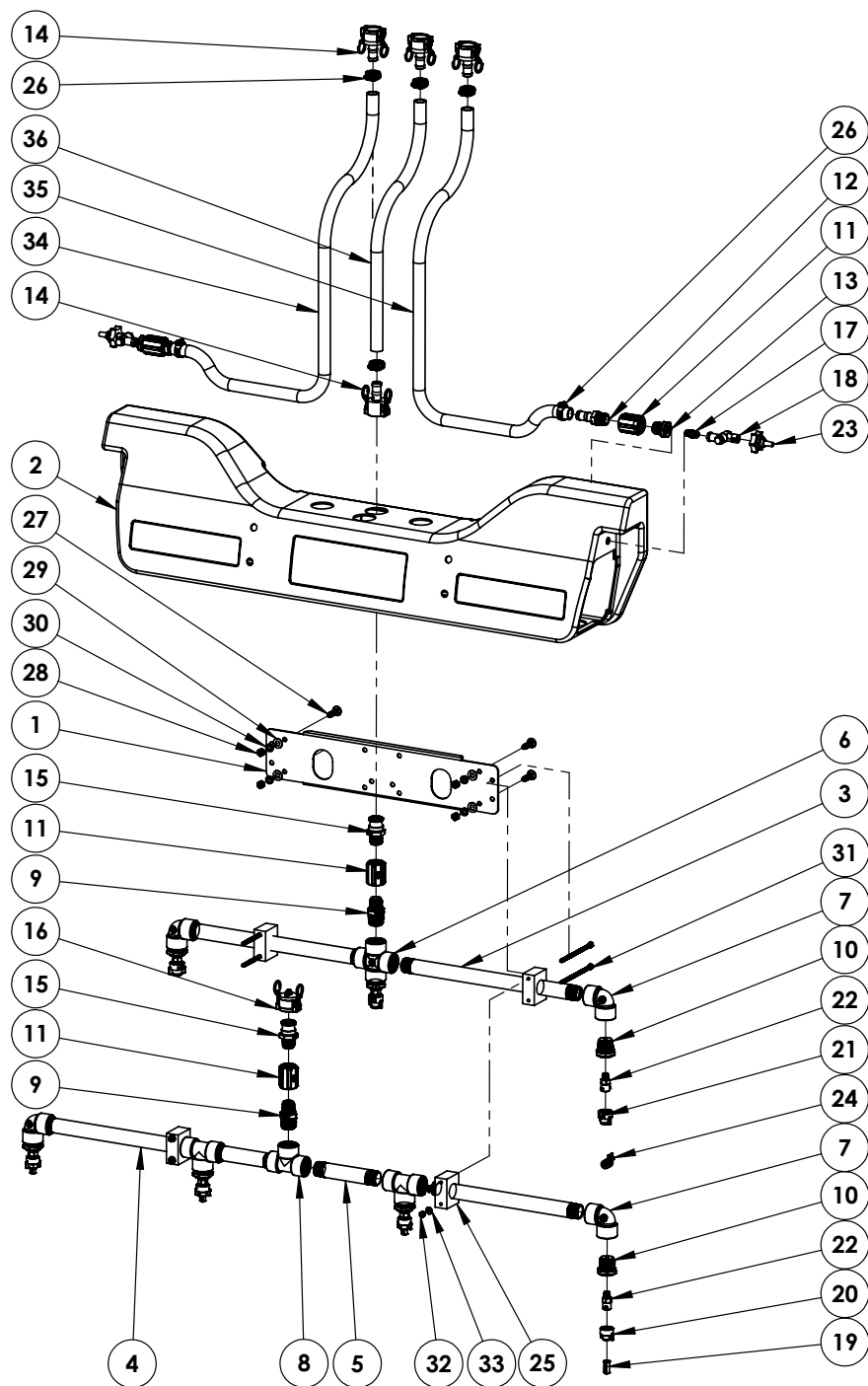
DETAIL VIEW HOSE REEL

ITEM NO.	PART #	DESCRIPTION	QTY.
1	AMAH01GY	HR030/050 REEL ONLY	1
2	CFCC003	Clamp for 1/2" Hose	2
3	CPLF01	Heavy Duty Spray Gun STAL16-viton seals	1
4	CFRB06	1/4-3/8 BSP FEMALE ELBOW	1
5	CFRB07	STAINLESS PIPE 3/8 THREAD BOTH ENDS	1
6	CFRB08	3/8 X 1/4 BALL BEARING SWIVEL	1
7	CFRB09	1/4 MALE THREAD X 1/2 HOSE BARB	2
8	CFRH03C	PHENOIC TAPERED HANDLE	1
9	CHWZF105	1 SAE Flat Washer	1
10	CFBW04M04FB	.5 M BSP - .5 F NPT Heavy Duty Swivel	1
11	CFPS02M02B	1/2 MNPT x 1/2 Hose Barb	1
12	CLUESB020002	1/2 EPDM HOSE - 50"	1
13	AZKH0018	Lock for Small Hose Reel	1
14	AZKH0003SS	3ASR03B HR FRAME 304 SS	1



Deicing Hose Reel (Optional)

OVERVIEW



DETAIL VIEW A

ITEM NO.	Part #	DESCRIPTION	QTY.
1	AZFP005	IMS4-6 Stainless boom bracket	1
2	AMICS001	Poly Shroud For Deicing Boom	1
3	AZFP020	1" x 17-3/4" Poly Pipe For Deicing Boom	2
4	AZFP022	1" x 14-13/16" Poly Pipe For Deicing Boom	2
5	AZFP021	1" x 6-1/4" Poly Pipe For Deicing Boom	2
6	CBCR100	1" Poly Pipe Cross	1
7	CBEL10090	1" Poly Pipe Elbow 90	4
8	CBTEE100	1 FNPT Pipe Tee	3
9	CBRN100-075	1 x 3/4 Poly Reducing Nipple	2
10	CBRB100025	1" MPT x 1/4" FPT Reducer Bushing	7
11	CBCPLG075	3/4" Poly Pipe Coupling	4
12	CFPS04M04B	3/4 MNPT To 3/4 Hose Shank	2
13	CV3RB3414	3/4 x 1/4 Reducer Bushing	2
14	CB075C	3/4" Female Coupling X 3/4" Hose Shank	4
15	CB075F	3/4 Male Adaptor x 3/4 MPT	2
16	CB075CAP	1/2 and 3/4 Camlock cap	1
17	CBNIP025SH	1/4" Short Poly Nipple	2
18	CA404072N	1/4"NPT X QA Swivel	2
19	CNST002	3 Stream White Nozzle	4
20	CNST004	25598 REP. CAP CE White & Washer	4
21	CNST009	Teejet Tip/CAP XR 1-1/2 GPM	3
22	CNST017	TeeJet 1/4" NPT x BSPT Female Connection Adapter	7
23	CNBC014	FC Boomxtender 4.3 GPM Orange Plastic Quick Connect	2
24	CXSC0002	Cable Tie 8"	2
25	AZFP015	1" Pipe Clamp	4
26	CFCW001	Clamp For 3/4" Hose	6
27	CHBS030723C	3/8" x 1-1/2" SS Carriage Bolt	4
28	CHNSH0323	3/8" SS Hex Nut	4
29	CHWSF033	3/8" SS Flat Washer	4
30	CHWSL033	3/8" SS Lock Washer	4
31	CHBS012323	.25 x 5.5 IN 18-8 Stainless Hex Head Bolt	4
32	CHNSN0123	1/4" Stainless Lock Nut	4
33	CHWSF013	1/4" SS Flat Washer	4
34	CLUESB020004	3/4" hose (to boomless nozzle)	1
35	CLUESB020004	3/4" hose (to boomless nozzle)	1
36	CLUESB020004	3/4" Hose (Center Boom Hose)	1

WARRANTY

CAMION® LIMITED WARRANTY:

Camion®, a division of Enduraplas, LLC ("Camion®") agrees to provide this non-transferable, non-assignable limited warranty ("Limited Warranty") to the original end-user purchaser ("Buyer") only of registered Camion® products ("Camion® Products") pursuant to the terms and conditions provided herein. By accepting delivery of Camion® Products the Buyer likewise agrees to the written terms and conditions of this Limited Warranty. This Limited Warranty gives the Buyer specific legal rights and the Buyer may have other rights that vary from state to state.

A. LIMITED WARRANTY COVERAGE

Camion® Products Complete Product Limited Warranty – Subject to the terms and conditions of this Limited Warranty, Camion® warrants to the Buyer of Camion® Products that it will be free from defects in workmanship for a period of two (2) Winter Seasons after the date of original purchase. Winter Season means October 1 through March 31 of any given year. At its sole option, Camion® will repair or replace defective parts at no charge for parts and labor.

Camion® Products Proprietary Parts and Frames Limited Warranty – Notwithstanding the foregoing and subject to the terms and conditions of this Limited Warranty, Camion® warrants to the Buyer of Camion® Products that the parts and frames will be free from material defects in materials or workmanship for a period of one (1) Year after the date of original purchase. At its sole option, Camion® will repair or replace defective parts at no charge for parts, but labor shall be the responsibility of the Buyer.

Third Party Parts and Components – This Limited Warranty does not cover certain third party manufactured parts and components, as such parts and components are covered by separate limited warranties provided by such third party manufacturers. For information regarding said limited warranties, please see each individual third party limited warranty.

Camion® Products Polyethylene Tank Limited Warranty - This Limited Warranty does not cover Camion® Products Polyethylene Tank(s), as such materials are covered by a separate limited warranty provided by Enduraplas®, LLC. For information regarding said limited warranty, please see the Enduraplas® Limited Warranty.

B. WHAT THIS LIMITED WARRANTY DOES NOT COVER

Camion® does not provide any warranty coverage, nor have any liability or responsibility for any defects, costs, expenses, or damages relating to any of the following:

- Expendable parts, such as nuts, bolts, etc. or any parts not furnished by Camion® or any damage caused by such parts.
- Airborne chemicals, road debris, salt, hail, floods, fire, windstorms, lightning or other acts of nature and other environmental conditions.
- Water contamination.
- Any part or product installed, repaired, or altered by anyone other than a Camion® Products authorized dealer or any damage caused by such parts or products.
- Normal wear and tear.
- Normal maintenance services.
- Incidental or consequential damages, including but not limited to inconvenience, transportation, personal injury, loss of property or loss of revenue.
- Parts or products that have been subject to abuse, negligence, accident, theft, tampering, misuse, neglect, corrosion, mishandling, improper installation, lack of or improper maintenance, care or storage.

WARRANTY

Installation of Camion® Products to a vehicle, including modification of Camion® Products or any such vehicle, is entirely at the Buyer's risk and expense, and compliance with motor vehicle regulations is the responsibility of the Buyer. Camion® is not responsible for any damage whatsoever to vehicles caused by installation or use of Camion® Products equipment.

Camion® Products are not intended for personal, family or household use and, as such, this Limited Warranty does not cover such use.

C. OTHER WARRANTIES DISCLAIMED AND EXCLUDED

THERE ARE NO WARRANTIES, EXPRESS OR IMPLIED, WHICH EXTEND BEYOND THE LIMITED WARRANTY HEREIN STATED, AND EXCEPT TO THE EXTENT PROHIBITED BY APPLICABLE LAW, CAMION® EXPRESSLY DISCLAIMS AND EXCLUDES ANY AND ALL OTHER WARRANTIES INCLUDING BUT NOT LIMITED TO WARRANTIES OF MERCHANTABILITY, FITNESS FOR PARTICULAR PURPOSE, INFRINGEMENT, CUSTOM OR USAGE OF TRADE, AND COURSE OF DEALING. NO AGENT, EMPLOYEE OR REPRESENTATIVE OF CAMION® HAS AUTHORITY TO BIND CAMION® TO ANY REPRESENTATION OR WARRANTY EXCEPT AS STATED IN THIS LIMITED WARRANTY.

D. PROCEDURE FOR OBTAINING WARRANTY COVERAGE

To submit a Limited Warranty claim, the Buyer must notify Camion® of the claimed defect within ten (10) days that the defect becomes known, in writing, at: cs@camionsystems.com. The original invoice or other similar proof of purchase of the applicable product or part must be provided by the Buyer to Camion® when making a claim under this Limited Warranty. Warranty claims must be received in writing by Camion® within the Limited Warranty period. To obtain service pursuant to this Limited Warranty, the Buyer must return the defective product or part to any Camion® Products authorized dealer (preferably, the dealer from whom the product or part was purchased). The Buyer shall be responsible for all transportation expenses to and from said dealer and accepts all risk of any damage in transit. To locate the nearest Camion® Products authorized dealer, please see the dealer locator at www.camionsystems.com.

The Limited Warranty is given solely to the Buyer and may not be transferred or assigned to any other person.

If you have questions about this Limited Warranty, contact Camion® at: cs@camionsystems.com.

E. GOVERNING LAW

This Limited Warranty will be governed by the laws of the State of North Dakota, without giving effect to any choice of law rule that would cause the application of the laws of any other jurisdiction. Any disputes regarding matters relating to this Limited Warranty will be resolved exclusively in the State of North Dakota and all parties consent to such jurisdiction. RIGHTS TO A JURY TRIAL, CLASS ACTION AND CONSOLIDATED DISPUTE RESOLUTION PROCEEDINGS ARE HEREBY WAIVED TO THE FURTHEST EXTENT PERMITTED BY LAW.

F. DISCLAIMER OF EXPENSES AND DAMAGES

The performance of necessary repairs and replacements, as determined by Camion® in its discretion, is the sole and exclusive remedy under this Limited Warranty or any implied warranty. Camion® does not authorize any person, including Camion® Products authorized dealers, to create for it any other obligation or liability in connection with Camion® Products. Except to the extent prohibited by applicable law, Camion® shall not be liable for personal injury, property damage, loss of liquid, loss of profit, incidental, consequential, contingent or special damages, or any other damages resulting from the use of, or inability to use, Camion® Products whether based on breach of this written Limited Warranty or any implied warranty, breach of contract, negligence or strict liability.

ACTIVATE YOUR 10-YEAR WARRANTY

How to Activate

To double your 5-year tank warranty,
visit www.camionsystems.com/warranty/
and register this product.



Watch Instruction Videos:
www.youtube.com

Discover More Helpful Tips:
www.IceControlTraining.com



Watch Instruction Videos:

www.youtube.com

Discover More Helpful Tips:

www.IceControlTraining.com



CAMION[®]
by Enduraplas

1 (877) 265-9929
cs@camionsystems.com
www.camionsystems.com

113 1st Street, Neche
ND 58265, USA

Discover More Helpful Tips:
www.IceControlTraining.com