



***CAMION®***  
***CONQUER EVERY STORM.***



**2024 - 2025 SNOWFIGHTING LINEUP**



# CONQUER EVERY STORM.



ICE MASTER® T-SERIES	4
ICE MASTER® T-SERIES MAX	8
STORM FIGHTR™	18
STORM COMMANDER™	20
ICE MASTER® COMPACT SPRAYERS	24
BRINE MASTER®	32
BRINE TRANSPORT TANKS	36
BRINE STORAGE TANKS	40
RELOCATABLE BRINE STORAGE	44
DIESEL TRANSFER TANKS	48
WARRANTY	53



# T-SERIES

## OWN THE STREETS.

Engineered, tested, and sold in the nation's coldest temperatures, the Ice Master® T-Series is the ultimate snowfighting tool. Now armed with the Storm Fightr™ stainless boom, the durable T-Series obliterates snow and ice season after season.



### FAST-FILL™ SYSTEM

Quickly attach and fill, so more time can be spent on the job.

### AUTO-DRAIN™ SUMP BASE

The sloped tank base channels every ounce of brine to the drain.

### DOUBLE SPRAY BAR SYSTEM

High volume pre- and post-treatment spray bars.

### BAFFLE-BALL™ SURGE CONTROL

The slosh is eliminated, so it feels like a solid load.

### RUST-ARMOUR™ STAINLESS FRAME

No rust. No corrosion. Years of unmatched service.

### TRI-ZONE™ SPRAY SELECTION

Choose where you want to spray. No more expensive salt damage. No more liquid wasted.





# T-SERIES

## MODELS

PRODUCT CODE	PUMP TYPE	GPS INCLUDED	LENGTH	WIDTH	HEIGHT	DRY WEIGHT (LBS)	CAPACITY (GAL)
IMT250G	Gas	No	81"	48"	39"	475	250
IMT250E	Electric	No	81"	48"	39"	475	250
IMT250GSC	Gas	Yes	81"	48"	39"	475	250
IMT250ESC	Electric	Yes	81"	48"	39"	475	250
IMT300G	Gas	No	102"	48"	40"	560	300
IMT300E	Electric	No	102"	48"	40"	560	300
IMT300GSC	Gas	Yes	102"	48"	40"	560	300
IMT300ESC	Electric	Yes	102"	48"	40"	560	300
IMT500G	Gas	No	104"	57"	50"	700	500
IMT500E	Electric	No	104"	57"	50"	700	500
IMT500GSC	Gas	Yes	104"	57"	50"	700	500
IMT500ESC	Electric	Yes	104"	57"	50"	700	500
IMT800G	Gas	No	120"	61"	59"	935	800
IMT800E	Electric	No	120"	61"	59"	935	800
IMT800GSC	Gas	Yes	120"	61"	59"	935	800
IMT800ESC	Electric	Yes	120"	61"	59"	935	800
IMT995G	Gas	No	120"	61"	75"	1035	995
IMT995E	Electric	No	120"	61"	75"	1035	995
IMT995GSC	Gas	Yes	120"	61"	75"	1035	995
IMT995ESC	Electric	Yes	120"	61"	75"	1035	995

\*STANDARD CODES INCLUDE HOSE REEL, TRUCK MOUNTING BRACKETS, RECEIVER HITCH BOOM MOUNT, IMB12 BOOM, AND BAFFLE BALLS.

## SPECIFICATIONS

SPRAY WIDTH	FRAME TYPE	COLOR	HOSE LENGTH	MOUNTING	SPRAY GUN TYPE	TANK TYPE
(Up to 30') Boom: IMB12	Stainless Steel	Safety Orange	100'	4 Tie-Down Slots	Adjustable Jet/Fan	Single-Piece, Roto Mold HDPE

## PUMPS

PRODUCT CODE	DESCRIPTION	MAX OPEN FLOW (GPM)	PRESSURE (PSI)	MOTOR
APAMT001	High Flow 12 Volt Electric Pump	52	35	12 VOLT DC
CB200PH5E	160 Electric Start Gas Pump	190	60	Gas
APDC09HS	245 Stainless Steel Hydraulic Pump	245	150	Hydraulic

## CONTROLS

PRODUCT CODE	DESCRIPTION	SPRAY ZONES	POWER
IMTC	In Cab Standard Controller	3	12 Volt
IMTCSC	Storm Commander™ Controller	3	12 Volt

## SPRAY BOOMS

PRODUCT CODE	SPRAY WIDTH	DRY WEIGHT (LBS)	MAX SPRAY VOLUME (GPM)
IMB12	Up to 30'	94	45
IMB22	Up to 30'	98	132





# T-SERIES MAX

## EMPOWERING LARGE-SCALE OPERATIONS.

Custom-built for large-scale needs and engineered to withstand the coldest conditions, the T-Series Max offers unmatched capacity and customization, ensuring your snowfighting operation is always prepared to face the storm.



### FAST-FILL™ SYSTEM

Quickly attach and fill, so more time can be spent on the job.

### CUSTOM ENGINEERING

Completely customizable with a wide range of combinations for your workload.

### AUTO-DRAIN™ SUMP BASE

The sloped tank base channels every ounce of brine to the drain.

### DOUBLE SPRAY BAR SYSTEM

High volume pre- and post-treatment spray bars.

### BAFFLE-BALL™ SURGE CONTROL

The slosh is eliminated, so it feels like a solid load.

### RUST-ARMOUR™ STAINLESS FRAME

No rust. No corrosion. Years of unmatched service.

### TRI-ZONE™ SPRAY SELECTION

Choose where you want to spray. No more expensive salt damage. No more liquid wasted.





# T-SERIES MAX

## MODELS

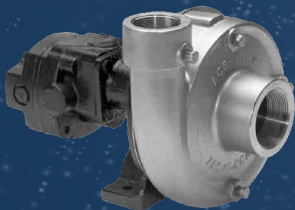
PRODUCT CODE	LENGTH	WIDTH	HEIGHT	DRY WEIGHT (LBS)	CAPACITY (GAL)
IMT1200	127"	72"	66"	1,250	1,200
IMT1600	156"	72"	70"	1,495	1,600
IMT1900	156"	72"	75"	1,598	1,900
IMT2200	156"	72"	87"	1,688	2,200
IMT2500	159"	87"	84"	2,040	2,500
IMT3000	159"	87"	99"	2,295	3,000

\*BAFFLE BALLS ARE INCLUDED WITH ALL T-SERIES MAX SPRAYERS.

## CUSTOMIZE THE T-SERIES MAX



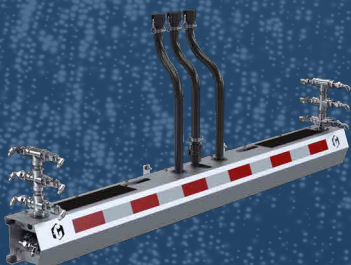
1. CHOOSE A SIZE



2. CHOOSE A PUMP



3. CHOOSE A CONTROLLER



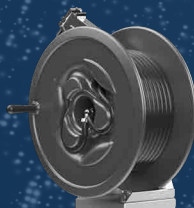
4. CHOOSE A SPRAY BOOM

### 5. ADD ADDITIONAL ACCESSORIES

\*OPTIONAL



TRUCK MOUNTING BRACKETS



100' HOSE REEL



RECIEVER HITCH MOUNT



SELF-LOADING LEGS



WORK LIGHTS

\*ADDITIONAL INFORMATION FOR ACCESSORIES ON PAGES 12-13.

## SPECIFICATIONS

SPRAY WIDTH	FRAME TYPE	COLOR	HOSE LENGTH	MOUNTING	SPRAY GUN TYPE	TANK TYPE
(Up to 30') Boom: IMB12	Stainless Steel	Safety Orange	100'	4 Tie-Down Slots	Adjustable Jet/Fan	Single-Piece, Roto Mold HDPE

## PUMPS

PRODUCT CODE	DESCRIPTION	MAX OPEN FLOW (GPM)	PRESSURE (PSI)	MOTOR
CB200PH5E	160 Electric Start Gas Pump	190	60	Gas
APDC09HS	245 Stainless Steel Hydraulic Pump	245	150	Hydraulic

## CONTROLS

PRODUCT CODE	DESCRIPTION	SPRAY ZONES	POWER
IMTC	In Cab Standard Controller	3	12 Volt
IMTCSC	Storm Commander™ Controller	3	12 Volt

## SPRAY BOOMS

PRODUCT CODE	SPRAY WIDTH	DRY WEIGHT (LBS)	MAX SPRAY VOLUME (GPM)
IMB12	Up to 30'	94	45
IMB22	Up to 30'	98	132

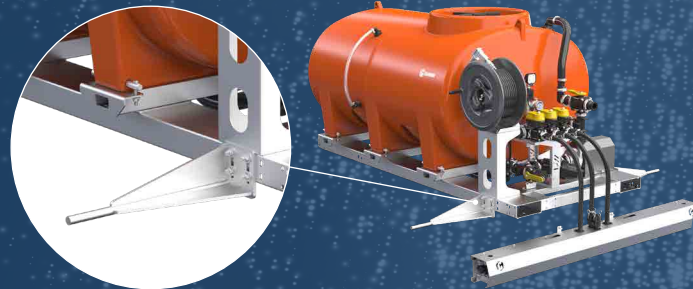




# T-SERIES ACCESSORIES



**100' HOSE REEL & SPRAY GUN**  
PRODUCT CODE: IMTHR01



**TAILGATE LOCK BARS**  
PRODUCT CODE: IMTMT02

## SELF-LOADING LEGS

PRODUCT CODE: IMTLS02 (500 - 995 GAL)  
PRODUCT CODE: IMTLS03 (1,200 - 3,000 GAL)



## ALL PUMP OPTIONS

### ECOMAX PUMP

THIS HIGH-FLOW 12-VOLT STAINLESS STEEL PUMP SPRAYS UP TO 80 GALLONS PER ACRE AT APPROXIMATELY 8 MPH.

- QUIET
- EFFICIENT
- SAFE
- ECO-FRIENDLY



**HIGH FLOW 12 VOLT**  
PRODUCT CODE: APAMT001  
\*CABLES, FUSE, AND SWITCHES INCLUDED  
\*ONLY AVAILABLE UP TO 995 GAL

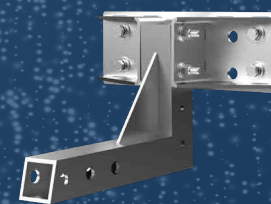


**ELECTRIC START GAS / 2" POLY PUMP**  
PRODUCT CODE: CB200PH5E

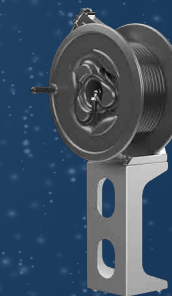


**STAINLESS STEEL HYDRAULIC**  
PRODUCT CODE: APDC09HS  
\*ONLY AVAILABLE OVER 550 GAL

## ADDITIONAL ACCESSORIES



**ADJUSTABLE RECEIVER HITCH**  
PRODUCT CODE: IMMBR01



**HOSE REEL RISER BRACKET**  
PRODUCT CODE: IMTHRS01



**BAFFLE BALLS**  
PRODUCT CODE: AVB355  
(10 BAFFLES PER 100 GALLONS)



# T-SERIES MAX ROLL-OFF UNITS

## YOUR OPERATION'S SECRET WEAPON.

Designed as a larger capacity option to our T-Series sprayer, the T-Series Max Roll-Off Unit offers expanded brine capacity to cater to the specific needs of any snowfighter. With a focus on adaptability, snowfighters can now build their own roll-off unit from the ground up, ensuring every component aligns with their operational requirements.

Its roll-off functionality allows seamless integration with your snowfighting fleet. Whether it's transitioning between jobs or relocating to higher priority areas, the T-Series Max Roll-Off Unit makes brine spraying easy and reduces downtime.

Engineered, tested, and sold in the toughest winter conditions, the T-Series Max Roll-Off Unit guarantees reliability and durability when it matters most. Trust in Camion's legacy of dependability to keep your operation ahead of the storm.





**“AT THE END OF THE DAY, OUR GOAL IS TO GET HOME SAFE... TO GET HOME TO OUR FAMILIES. KNOWING THAT WE HAVE STRONG, STURDY EQUIPMENT THAT’S BACKING US IN OUR OPERATION ON A DAILY BASIS IS A HUGE THING FOR US.”**

- KENNY FIELDING  
GRANITE STATE DE-ICING SUPPLY  
MERRIMACK, NH

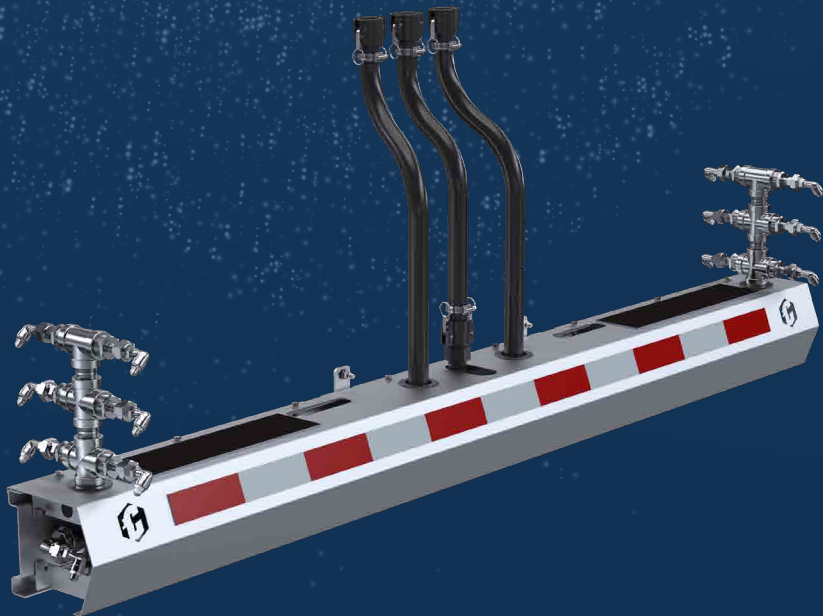




# STORM FIGHTR™

## THIS BOOM DOESN'T BACK DOWN.

Forged from stainless steel, the Storm Fightr™ Armored Boom was built from the ground up to defeat anything you can throw at it, from corrosion to getting backed into the toughest snow pile. Your spray nozzles have never been as secure.



**TRI-ZONE™ SPRAY SELECTION**  
Easily select left, right, and center spray channels.

**EVEN-COVER™ NOZZLES**  
Nozzles are evenly spaced, so you don't miss an inch.

**ICE-SLAYER™ NOZZLE**  
Spray up to 132 gallons per minute on select Storm Fightr™ models.

**IMPACT-SHIELD™ SPRAYER GAURD**  
a built-in stainless steel shield defends your nozzles from impact.

### SPECIFICATIONS

PRODUCT CODE	SPRAY WIDTH	# OF SPRAY NOZZLES	DRY WEIGHT (LBS)	MAX SPRAY VOLUME (GPM)
IMB12	Up to 30'	12	94	45
IMB22	Up to 30'	22	98	132





# STORM COMMANDER™

## YOUR IN-CAB COMMAND CENTER

The Storm Commander™ gives you the real-time data you need to beat billing disputes, frivolous litigation, and logistics breakdowns. It tracks application rates, GPS tracks, and much more, and backs it all up to an easy-to-use web portal. And it all comes in a rugged wireless package, complete with physical buttons and steel switches.



### WEB DASHBOARD

Get access to real-time datapoints, GPS tracks, dash cam feeds, on-site Mini RWIS cameras, and diagnostics, all in one dashboard.

### POINT-LOCK™ GPS TRACKING

See where your trucks go in real time and save routes for billing and litigation protection.

### SWIFT-ASSIST™ DIAGNOSTICS

Access on-demand help and speed up field repairs with real-time controller diagnostics.

### RUGGED-SWITCH™ INTERFACE

Built around tough buttons and toggle switches that respond to every command, gloved or not, even on the coldest nights.

### INSTANT-SYNC™ WEB CONNECTION

Operational data gets uploaded to the cloud in real time.

### AIR-TETHER™ WIRELESS CONTROL

A fully wireless in-cab connection makes this unit easy to install before an event and more rugged than wired units.

### CLOUD-INTEGRATED HD DASH CAM\*

Integrated dashcams give you live feeds of roads, properties, spray patterns, and drivers. Instant cloud backups archive your footage for later use in billing disputes and litigation defense.

\*OPTIONAL

### BUILT FOR SNOWFIGHTING™

This unit was built from the ground up for winter and displays the data you need for efficient operations, as well as billing and liability protection.



# SNOWFIGHTER NATION®

Snowfighting isn't just a job; it's a mission—a calling to serve our communities when faced with the coldest weather conditions. You rush into storms, snow, and ice, making it possible for emergency services, commuters, and our communities to function smoothly.

Each snowfighter brings their own unique approach to the table, blending technical expertise with practical experience to develop innovative solutions tailored to their specific challenges. This is what makes the snowfighting community a diverse and dynamic one. At Camion, we recognize the value of this diversity, which is why we've created Snowfighter Nation.

Our event series and online platform provide snowfighters a forum to share their experiences, exchange ideas, and learn from certified professionals in the field. At Camion, we empower snowfighters and equip them with the tools they need to conquer every storm.

Snowfighters, we salute you.

SCAN TO JOIN SNOWFIGHTER NATION





# H-SERIES

## HEAVY DUTY ENGINEERING DONE SAFE.

The Ice Master® H-Series hitch-mounted sprayer is built with Safe-Balance™ technology, reducing sloshing and stabilizing weight for your compact tractor.



### EASY-ACCESS™ LID

The easy-to-reach lid located at the side of the tank makes filling quick and simple.

### POLY-FLEX™ HOSE REEL

Unlike steel, this rust-free, crack-proof poly hose reel will flex.

### SAFE-BALANCE™ DESIGN

The tank shape shifts weight closer to the rear wheels, making spraying on sloped terrain safer.

### DOUBLE SPRAY BAR SYSTEM

High volume pre- and post-treatment spray bars.

### TIME-SAVER™ FORK POINTS

The built-in fork slots make the entire unit a breeze to lift and load.

### SOLID-WALL™ TANK CONSTRUCTION

With thick side walls, this workhorse is impact resistant and virtually indestructible.





# H-SERIES

## SPECIFICATIONS

PRODUCT CODE	CAPACITY (GAL)	SPRAY WIDTH	FRAME TYPE	COLOR	HOSE LENGTH	MOUNTING	DIMENSIONS	SPRAY GUN TYPE
IMH050	50	(Up to 6') Boom: IMB7	Stainless Steel	Safety Orange	15'	3-Point Linkage Hitch	50 Gallons LxWxH 32" x 55" x 43"	Adjustable Jet/ Fan

## H-SERIES OPTIONS



RECEIVER HITCH

100' HOSE REEL



# SPRAY EVERY INCH.



# U-SERIES

## TURN YOUR UTV INTO A SNOWFIGHTING MACHINE.

Arm your side-by-side with a 100-gallon full-drain tank and a reliable two-bar boom sprayer with our Ice Master® U-Series sprayer. Jam-packed with top-of-the-line features, the U-Series turns your UTV into a snowfighting beast.



### **POLY-FLEX™ HOSE REEL**

Unlike steel, this rust-free, crack-proof poly hose reel will flex.

### **AUTO-DRAIN™ SUMP BASE**

The sloped tank base channels every ounce of brine to the drain.

### **TIME-SAVER™ FORK POINTS**

The built-in fork slots make the entire unit a breeze to lift and load.

### **DOUBLE SPRAY BAR SYSTEM**

High volume pre- and post- treatment spray bars.

### **EASY-ADJUST™ BOOM MOUNTS**

Quickly set the boom height to match the spray nozzles' recommended height.

### **RUST-ARMOUR™ STAINLESS FRAME**

No rust. No corrosion. Years of unmatched service.





# U-SERIES

## SPECIFICATIONS

PRODUCT CODE	CAPACITY (GAL)	SPRAY WIDTH	FRAME TYPE	COLOR	HOSE LENGTH	MOUNTING	DIMENSIONS	SPRAY GUN TYPE	FLOW METER
IMU100	100	(Up to 6') Boom: IMB7	Stainless Steel	Safety Orange	100'	4 Tie-Down Slots	100 Gallons LxWxH 49" x 45" x 27"	Adjustable Jet/Fan	Optional

## U-SERIES OPTIONS



7.5" BAFFLE BALLS  
AVB195



FLOW METER  
ARFD01



# READY FOR ACTION.



# BRINE MASTER®

## THE ULTIMATE ALL-IN-ONE BRINE MAKER.

The Brine Master® includes an integrated mixing tank and a unique all-in-one construction, giving you everything you need to jump-start your in-house brine production. And it's built tough, with a stainless frame and no finicky automated sensors to go down when you need it most.



### \*FLOW METER

A flow meter comes standard so you can easily monitor your flow rate.

### \*SALT-EXACT SALINITY READER

Our upgraded refractometer salinity reader gives you hyper-accurate brine salinity readings.

### CENTRAL CONTROL STATION

All your valves are in one place to make operating the Brine Master® a breeze.

### \*FULLY DRAINABLE HOPPER

Built for easy maintenance, with a fully-drainable hopper for hassle-free cleaning.

### TIME-SAVER™ FORK POINTS

Built-in fork points make your unit east to move in and out of storage.

### ALL-IN-ONE COMPLETE UNIT

A complete unit with all the components. No shopping for further items.

\*FEATURES ONLY APPLICABLE TO THE BRINE MASTER® 3,000.





# BRINE MASTER®

## SPECIFICATIONS

MODEL	PRODUCT CODE	FRAME TYPE	BRINE PRODUCTION	DIMENSIONS (L x W x H)	TANK TYPE	HOPPER VOLUME	MIXING TANK CAPACITY
BRINE MASTER® 1,600	BM1600	Stainless Steel	UP TO 1,600 GAL/HOUR	90" x 68" x 72"	Single-Piece, Roto Mold HDPE	0.5 Cu Yards	400 GAL
BRINE MASTER® 3,000	BM3000	Stainless Steel	UP TO 3,000 GAL/HOUR	181" x 65" x 82"	Single-Piece, Roto Mold HDPE	2 Cu Yards	600 GAL



1,600 GAL BRINE MASTER®



3,000 GAL BRINE MASTER®



# BRINE MADE EASY.



# BRINE TRANSPORT TANK

## TAKE YOUR BRINE ON THE ROAD.

Other drivers can't miss our high-vis orange tanks. Baffle balls keep unpredictable sloshing to a minimum, and our patented pin-mount system is a safe, low-maintenance alternative to traditional mounting systems.

*\*Baffle balls are optional.*



### THICK-WALL™ DESIGN

Extra-thick walls provide unmatched strength and durability.

### ANTI-SPLASH™ STAINLESS LID

Lockable and spill-proof, this lid keeps liquid in while traveling on rough terrain.

(ONLY ON TANKS 1,600 GAL OR LARGER.)

### LIFTING-LUGS™

Built-in and engineered to take the dry weight of the tank, these make lifting the tank on and off the trailer a breeze.

### PIN-MOUNT™ SYSTEM

The molded-in mounting lugs combined with heavy-duty steel pins will keep this tank fixed without movement.

### SINGLE-PIECE™ CONSTRUCTION

Rotationally-molded in a single mold means that the tank is seamless, water-tight, and leak-proof.

### ROTO-MOLD™ CONSTRUCTION

When cooked and cooled at an even rate, the raw material is bonded together to make this tank virtually indestructible.





# BRINE TRANSPORT TANK

## SPECIFICATIONS

PRODUCT CODE	SIZE	DIMENSIONS (L x W x H)	DRY WEIGHT (LBS)	TANK WARRANTY
THF00995ORC	995 GAL	94" x 60" x 63"	435	10 Years
THF01600ORC	1,600 GAL	130" x 71" x 59"	590	10 Years
THF02200ORC	2,200 GAL	130" x 71" x 72"	770	10 Years
THF03000ORC	3,000 GAL	130" x 86" x 91"	1,200	10 Years
THF04500ORC	4,500 GAL	179" x 95" x 84"	1,870	10 Years

## ADDITIONAL ACCESSORIES



14" BAFFLE BALLS  
AVB355



PREMIUM TRANSPORT.



# BRINE STORAGE TANK

## THE SNOWFIGHTER'S STORAGE TANK.

These tanks keep your brine ready for the call. That's why we beefed up our Brine Storage Tanks with tough premium features. Built by snowfighters, for snowfighters, the Camion® Brine Storage Tank is built to withstand the harshest conditions.



### RECIRCULATION FITTING

Keep the liquid circulating.

### ANCHOR-POINT™ LUGS

Four hefty built-in lifting and tie-down points at each corner make it easy to handle.

### STRONG-X™ ROOF DESIGN

The bulked-up roof structure with molded-in truss-like supports eliminate collapsing.

### RUST-ARMOUR™ FITTINGS

No rust. No corrosion. Years of unmatched service.

### RIBBED-WALL™ STRUCTURE

The ribs act like belts around the tank, keeping it in shape. This reduces bulging.

### CORRODE-PROOF™ MATERIAL

Built with salt brine compliant material, this tank will keep the brine pure.





# BRINE STORAGE TANK

## SPECIFICATIONS

PRODUCT CODE	SIZE	DIMENSIONS (L x W x H)	DRY WEIGHT (LBS)	TANK WARRANTY
THV01100GYC	1,100 GAL	60" x 97"	210	10 Years
THV03000GYC	3,000 GAL	90" x 125"	550	10 Years
THV05000GYC	5,000 GAL	110" x 150"	1,210	10 Years
THV10000GYC	10,000 GAL	144" x 178"	2,800	10 Years



BUILT FOR WINTER.



# RELOCATABLE BRINE STORAGE

## YOUR ON-SITE BRINE DEPOT.

Staging your brine on site can save your trucks valuable refilling time when moments matter. Our relocatable storage trailer makes it easy to safely store brine when and where you need it, without the setup of more permanent tanks.



### **CORRODE-PROOF™ MATERIAL**

Built with salt brine compliant material, this tank will keep the brine pure.

### **DROP & RAISE™ TECHNOLOGY**

The unique jacking system is simple to pump and is placed at the perfect height.

### **STRONG-X™ ROOF DESIGN**

The bulked-up roof structure with molded-in truss-like supports eliminate collapsing.

### **HEAVY-DUTY TUBE FRAME**

This unit is powder-coated and ready for abuse. All wires are protected inside the tubes and built-in house holders are included.

### **RIBBED-WALL™ STRUCTURE**

The ribs act like belts around the tank, keeping it in shape. This reduces bulging.

### **AUTO-DRAIN™ CONE BASE**

The 15° cone base channels every ounce of liquid to the drain. No more cleaning.





# RELOCATABLE BRINE STORAGE

## SPECIFICATIONS

PRODUCT CODE	SIZE	NUMBER OF TANKS	DIMENSIONS (L x W x H)	TANK WARRANTY
IMWC6000	6,000 GAL	2 TANKS	21' x 100" x 146" - 158"	10 Years
IMWC9000	9,000 GAL	3 TANKS	29' x 100" x 146" - 158"	10 Years



MOVE IT WHERE  
YOU NEED IT.



# DIESEL FUEL BOSS®

## OUTLAST THE STORM.

When you're in the elements, you stop for no one. The all-in-one Diesel Fuel Boss® refueling unit keeps you on scene long after everyone else has gone home. Equipped with a pump, hose, and gun, our pre-built design is ready to work right out of the box.



### PUMP-SHIELD™ COVER

The pump and gun are protected under a weather-safe cover.

### EASY-LIFT™ HANDLES

Molded-in, solid handles make loading and unloading this unit effortless.

### ANTI-SPILL™ BREATHER

The leak-proof poly breather keeps deisel in and dust out.

### CONDENSATE-ARMOUR™ MATERIAL

Unlike steel and aluminum, this polyethylene material reduces condensation build-up to minimize machinery filter damage.

### SELF-ACTIVATE™ SHUT-OFF NOZZLE

This well-built diesel fuel nozzle is engineered to shut-off automatically when the machine is completely full.

### ANCHOR-POINT™ STRAP GROOVES

Heavy-duty, never-fail strap grooves are built-in on both sides. This makes tying down this unit quick and hassle-free.





# DIESEL FUEL BOSS®

## SPECIFICATIONS

PRODUCT CODE	TANK SIZE (GAL)	DIMENSIONS (L x W x H)	FILL POINT	PUMP	GUN	FLOW RATE (GPM)	ELECTRIC CABLE LENGTH	HOSE LENGTH	DRY WEIGHT (LBS)
RDU025C10DC	25	32" x 27" x 20"	3"	VANE	AUTO SHUT-OFF	10	16'	16'	69
RDU055C10DC	55	32" x 27" x 30"	3"	VANE	AUTO SHUT-OFF	10	16'	16'	80
RDU075N10DC	75	51" x 21" x 31"	3"	VANE	AUTO SHUT-OFF	10	16'	16'	90
RDU100S10DC	100	47" x 34" x 34"	3"	VANE	AUTO SHUT-OFF	10	16'	16'	100



STOP FOR NO ONE.



# THE CAMION® DEALER NETWORK.



## MEGASTORES

Whether you need in-person equipment consultations or on-the-ground support for existing equipment, your local Camion® dealer is your go-to resource.

Visit: [www.camionsystems.com/buying-options](http://www.camionsystems.com/buying-options) to get started.



# INFORMATION.

## FREIGHT

Contact us to learn the exact freight charges in your area.

## WARRANTY

When a storm hits, lives depend on the equipment you choose. We engineered our rugged line of brine makers, storage solutions, and sprayers to give you the edge you need when the city is counting on you to keep roads open, and we back what we build.

Camion® equipment is backed by a one year warranty and all poly storage and sprayer tanks are covered by a 10-year warranty when you register your product.

Visit [www.camionsystems.com/policies](http://www.camionsystems.com/policies) to read our entire policy and register your products.



The following are registered (®) or unregistered (™) trademarks of Premia Group, A Tank Holding Corporation: CAMION®, ICE MASTER SYSTEMS®, ENDURAPLAS®, BE A MASTER™, BRINE MASTER®, FUEL BOSS®, LIQUID MASTER®, BAFFLE-BALL™, AUTO-DRAIN™, SOLID-WALL™, POLY-FLEX™, RUST-ARMOUR™, TIME-SAVER™, EASY-ADJUST™, FAST-FILL™, TRI-ZONE™, RAPID-EMPTY™, HANDY-TAP™, ANCHOR-POINT™, STRONG-X™, CORODE-PROOF™, RIBBED-WALL™, ANTI-SPILL™, PUMP-SHIELD™, IMPACT-FLEX™, EASY-LIFT™, SELF-ACTIVATE™, CONDENSATE-ARMOR™, STORM COMMANDER™, POINT-LOCK™, INSTANT-SYNCTM, SWIFT-ASSIST™, RUGGED-SWITCH™, BUILT FOR SNOWFIGHTING™, AIR-TETHER™, STORM FIGHTR™, IMPACT-SHIELD™.

Camion® reserves the right to change specifications, design and price of the products described in this literature without notice. Images used in this literature are pictured for display purposes only. Warranty of all products is only applicable when the product is used in accord with the operator's manual. Improper use of any equipment or accessory may cause serious or fatal injury. Read, understand and follow carefully the operator's manual before using these products.





**CAMION®**

113 1st Street  
Neché, ND 58265  
USA

**CONTACT US:**

cs@camionsystems.com  
1 (877) 265-9929



# CONQUER EVERY STORM.